

TECHNICAL MANUAL

ILLUSTRATED PARTS BREAKDOWN

**ELECTRIC MOTOR-DRIVEN PORTABLE
AIR COMPRESSOR ASSEMBLY**

USAF	MODEL	PART
TYPE	NUMBER	NUMBER
MB-2A	4MB-2A	68151
NATIONAL STOCK NO. 4310-01-037-2222		

DAVEY COMPRESSOR CO. (16004)
DSA700-76-C-8333
DSA700-77-C-8430

Basic And All Changes Have Been Merged To
Make This A Complete Publication.

Published under authority of the Secretary of the Air Force.

LIST OF EFFECTIVE PAGES

INSERT LATEST CHANGED PAGES. DESTROY SUPERSEDED PAGES.

Dates of issue for original and changed pages are:

Original ... 0 5 Jan 78

Change ... 1 .. 15 May 79

Change ... 2 .. 26 Feb 80

TOTAL NUMBER OF PAGES IN THIS PUBLICATION IS 42. CONSISTING OF THE FOLLOWING:

Page No.	*Change No.
Title	2
A	2
i	0
ii Blank	0
1-1 - 1-2	0
1-3	1
1-4 Blank	0
1-5	0
2-0 - 2-2	1
2-3 - 2-7	0
2-8	2
2-9	0
2-10 - 2-12	1
2-13 - 2-14	0
2-15	1
2-16 - 2-22	0
3-1 - 3-5	1
3-6 - 3-7	0
3-8 Blank	0
4-1	0
4-2 Blank	0

*Zero in this column indicates an original page.

TABLE OF CONTENTS

Section/Para		Page
I	INTRODUCTION	1-1
	1-1. MODEL COVERED	1-1
	1-2. PARTS THAT ARE LISTED	1-1
	1-3. LISTING OF SIMILAR ASSEMBLIES	1-1
	1-4. PARTS IN KITS	1-1
	1-6. SYMBOLS AND ABBREVIATIONS	1-1
	1-7. FEDERAL SUPPLY CODE FOR MANUFACTURERS (FSCM)	1-2
	1-8. USABLE ON CODES	1-3
	1-9. SOURCE, MAINTENANCE, AND RECOVERABILITY (SMR) CODES	1-3
	1-10. RELATED PUBLICATIONS	1-3
II	MAINTENANCE PARTS LIST	2-1
Fig. No.	Title	
1.	Air Compressor Assembly, Type MB-2A, Model 4MB-2A	2-0
2.	Hose Reel Assembly	2-4
3.	Motor Control Box Assembly	2-6
4.	Service Outlet Assembly	2-9
5.	Air Compressor Assembly	2-11
6.	Oil Separator Assembly	2-14
7.	Thermal Bypass Valve Assembly	2-16
8.	Rotor-Stator Assembly	2-17
9.	Electric Motor Assembly	2-20
10.	Wheel and Hub Assembly	2-21
11.	Brake Assembly	2-22
III	NUMERICAL INDEX	3-1
IV	REFERENCE DESIGNATION INDEX	4-1



SECTION I

INTRODUCTION

1-1. MODEL COVERED. This illustrated parts breakdown covers the Model 4MB-2A, Type MB-2A, electric motor-driven portable air compressor. The unit is manufactured by Davey Compressor Company (FSCM 16004), Cincinnati, Ohio 45242. Part number 68151 is assigned to the unit assembly.

1-2. PARTS THAT ARE LISTED. In general, the assemblies and parts installed at the time the end items were manufactured are listed and identified in this manual. When an assembly or part (including vendor items), which is different from the original, is installed during the manufacture of later items, series, or blocks, all assemblies and parts will be listed (and Usable On coded). However, when the original assembly or part does not have continued application (no spares of the original were procured or such spares are no longer authorized for replacement), only the preferred assembly or part is listed. Also, when an assembly or part is installed during modification, and the original does not have continued application, only the preferred item will be listed. Interchangeable and substitute assemblies and parts, subsequently authorized by the Government, are not listed in this manual; such items are identified by information available through the Interchangeable and Substitute (I & S) Data Systems. Refer to T.O.00-25-184. When a standard size part can be replaced with an oversize or undersize part, the latter parts, showing sizes, are also listed. Repair Parts Kits and Quick Change Units are listed when they are available for replacement.

1-3. LISTING OF SIMILAR ASSEMBLIES. When similar assemblies contain approximately 51% or more of identical parts, the assemblies are combined and listed as follows.

- a. The assemblies are listed first followed by detail parts.
- b. A part common to all assemblies in the same quantity is listed once.
- c. A part common to all assemblies in differing quantities is listed once for each quantity and identified to which assembly each listing pertains.
- d. Parts peculiar to an assembly are listed once and identified to which assembly each pertains.

1-4. PARTS IN KITS. This publication reflects the listing of repair parts kits. Certain replacement parts are stocked only in kits. Standard parts and parts having multi-application are stocked in kits. Kit parts should not be ordered from separate stock to make up a kit.

1-5. When replacement parts of an assembly are available in the form of kits, the words (Repair kit available) follows the description of the applicable assembly. The detail parts of the assembly that are contained in the kit are identified by a symbol before the part number. A footnote follows the Maintenance Parts List (MPL) to define the symbol. The kit listing follows the last detail part of the assembly in the same indentation as the assembly. Kit source codes, assigned to the kits and their components appear in the SMR column of the Numerical Index, Section III.

1-6. SYMBOLS AND ABBREVIATIONS. Symbols and abbreviations used in the MPL are in accordance with Military Standard, MIL-STD-12, or are defined below.

- (AP) - This abbreviation, found in the Description column, indicates the part is an "attaching part" for the next higher assembly or part.
- F - This abbreviation, found in the Numerical Index, Section III, is used in conjunction with a figure and index number, such as F7-6. It is assigned to a part listed in the numerical index having no index number assigned in the MPL. The abbreviation means the item so listed "follows" that figure and index number (example: the listed item follows index number 6 on figure 7).
- # - This symbol, inserted flush right following a part number in the MPL for Government Furnished Equipment

(GFE) and Contractor Furnished Equipment (CFE) means that detail parts are listed in a separate manual. Refer to "Related Publications" paragraph of this Introduction for publication number, when applicable.

- * - This symbol, inserted flush right following a part number in the MPL, means "Requisition this marking in accordance with the requirements of AFR 6-4." The symbol is applied to identifying drawing numbers for decalcomanias, metalcalcs, and vinyl film markings.
- † - This symbol, also ††, inserted in front of a part number in the MPL, indicates the footnote at the end of the parts list for that assembly should be referenced. In general, the symbol is used to indicate a component of a kit.

1-7. FEDERAL SUPPLY CODES FOR MANUFACTURERS (FSCM). These five digit code numbers are used to identify the actual manufacturer of vendor items used in this equipment. The code appears in parentheses in the Description column following the description of the part involved. The applicable codes are listed below. The prime contractor's code is also listed below. The absence of a manufacturer's code in the Description column of the MPL means that the part is the end item manufacturer's part number or commercial off-the-shelf type item that should be ordered by complete description. The following codes have been excerpted from Cataloging Handbook H4-1 and H4-2, Federal Supply Code for Manufacturers.

CODE	MANUFACTURER'S NAME AND ADDRESS		
		16004	DAVEY COMPRESSOR CO. 11060 Kenwood Road Cincinnati, OH 45242
00736	AIR-MAZE DIV. of INCOM INTERNATIONAL INC. 2500 Miles Road Cleveland, OH 44128	22938	PROTOTYPE DEVELOPMENT, INC. 7750 Hub Parkway Cleveland, OH 44125
01276	AEROQUIP CORP. INDUSTRIAL DIVISION 1225 W. Main Street Van Wert, OH 45891	24617	GENERAL MOTORS CORP. 3044 Grand Blvd. Detroit, MI 48202
01566	MITE CORP. HELI-COIL PRODUCTS DIV. Shelter Rock Lane Danbury, CT 06810	27191	CUTLER HAMMER INC. POWER DISTRIBUTION and CONTROL DIV. Milwaukee, WI
02660	BUNKER RAMO CORP. AMPHENOL CONNECTOR DIV. 2801 S. 25th Avenue Broadview, IL 60153	27192	CUTLER-HAMMER INC. POWER CONTROL DIV. 4265 N. 30th Street Milwaukee, WI 53216
03743	APPLETON ELECTRIC CO. 1701 W. Wellington Ave. Chicago, IL 60657	30119	IDEAL INDUSTRIES, INC. Becker Place Sycamore, IL 60178
04618	AMP SPECIAL INDUSTRIES Div. of AMP Products Corp. P.O. Box 1776 Paoli, PA 19301	34494	KUNKLE VALVE CO. Fort Wayne, IN
09332	AEROFAST INC. P.O. Box 324 Wheaton, IL 60187	38151	MARATHON ELECTRIC P.O. Box 1407 Cherry and Randolph Wausau, WI 54402
15235	CROUSE-HINDS CO. Wolf and 7th N. Syracuse, NY 13201	51741	TIME MARK CORP. P.O. Box 15127 855 N. Sheridan Tulsa, OK 74115

60038	TIMKEN ROLLER BEARING CO. 1835 Dueber Ave. S.W. Canton, OH 44706	79136	WALDES KOHINOOR INC. 47-16 Austel Place Long Island City, NY 11101
71785	TRW CINCH CONNECTORS 1501 Morse Avenue Elk Grove Village, IL 60007	79227	WATTS REGULATOR CO. 10 Embankment Street, P.O. Box 628 Lawrence, MA 01842
73389	ADALET MFG. DIV. of SCOTT and FETZER CO. 4801 W. 150th Street Cleveland, OH 44135	79470	WEATHERHEAD CO. 300 East 131st Street Cleveland, OH 44108
75272	KICKHAEFER MFG. CO. 1964 Wisconsin Ave. Grafton, WI 53024	86107	CENTRAL BRASS MFG. CO. 2950 East 55th Street Cleveland, OH 44127
77060	PACKARD ELECTRIC DIVISION of GENERAL MOTORS CORP. 408 Dana St. N.E. Warren, OH 44481	88044	AERONAUTICAL STANDARDS GROUP DEPT. of NAVY and AIR FORCE Silver Springs, MD 20900
77342	AMF INC. POTTER and BRUMFIELD DIV. 200 Richland Creek Drive Princeton, IN 47670	89326	DeLAVAL TURBINE INC. BARKSDALE CONTROLS DIV. 5125 Alcoa Avenue Los Angeles, CA 90058
78189	SHAKEPROOF DIV. of ILLINOIS TOOL WORKS Elgin, IL	91816	JAMES POND and CLARK DIV. CIRCLE SEAL CORP. P.O. Box 3666 Anaheim, CA 92803
		96906	MILITARY STANDARDS

1-8. USABLE ON CODES. Two configurations of the Type MB-2A air compressor unit are covered in this publication. Usable On Codes assigned to each configuration are listed below. The absence of a code in the Usable On Code column of the MPL indicates that parts listed are usable as replacements on all configurations covered by this publication.

Usable On Code	Used On
A	Unit serial numbers 13DY2MS-22250 thru 13DY2MS-28325
B	Unit serial numbers 13DY2MS-28326 and up

1-9. SOURCE, MAINTENANCE, AND RECOVERABILITY (SMR) CODES. This manual contains Joint Military Services Uniform SMR Codes only. Definitions of these SMR codes are available in T.O.00-25-195.

1-10. RELATED PUBLICATIONS. Publications used in conjunction with this Illustrated Parts Breakdown are:

T.O.34Y1-64-21 - Operation and Service Instructions, Compressor, Air, Electric Motor-Driven Portable, Type MB-2A, Model 4MB-2A, Part Number 68151

T.O.34Y1-64-23 - Overhaul Instructions, Compressor, Air, Electric Motor-Driven Portable, Type MB-2A, Model 4MB-2A, Part Number 68151

[Faint, illegible text covering the majority of the page, appearing as light gray noise or bleed-through.]



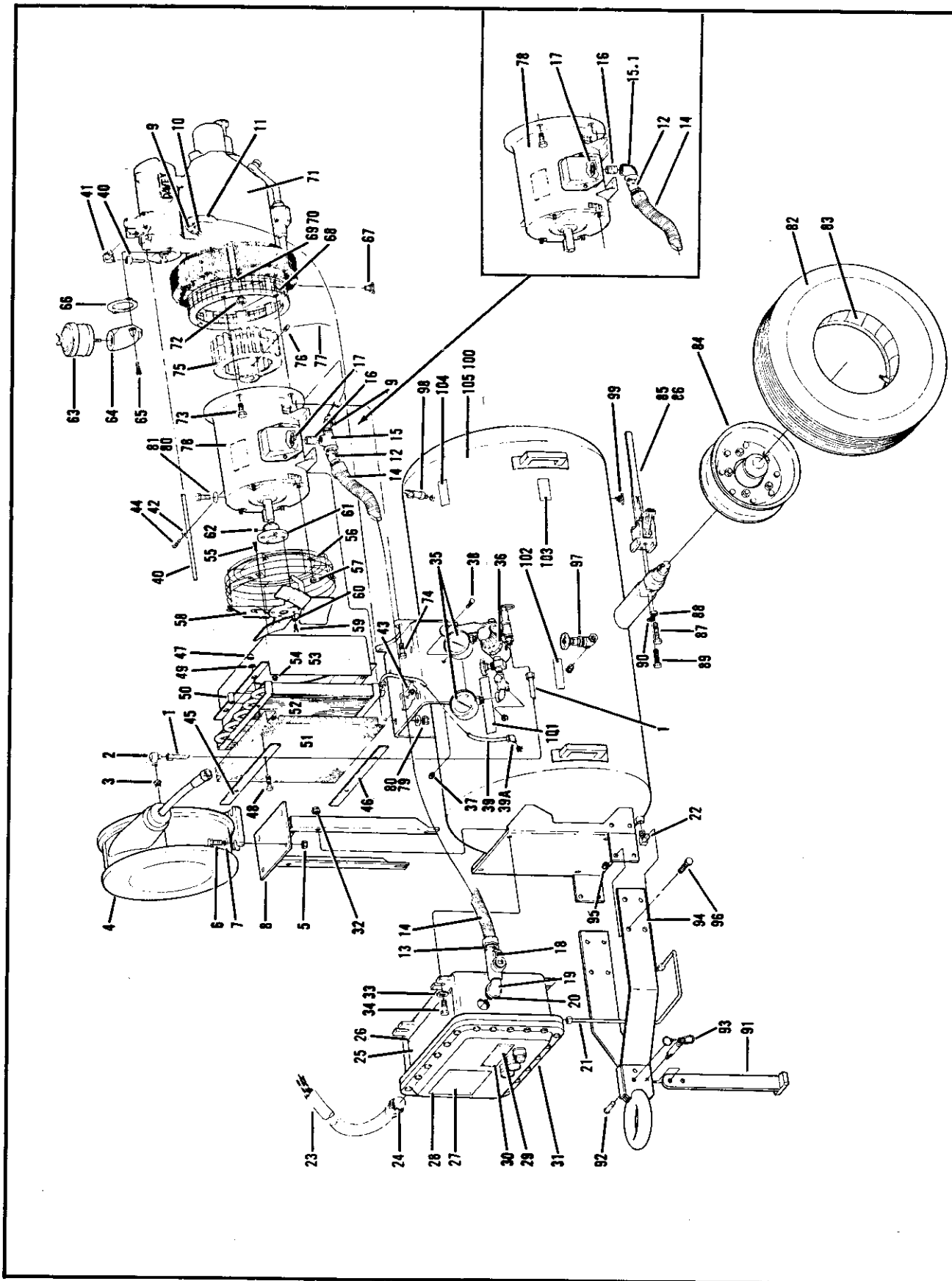


Figure 1. Air Compressor Assembly, Type MB-2A, Model 4MB-2A

SECTION II

MAINTENANCE PARTS LIST

FIG. & INDEX NO.	PART NUMBER	DESCRIPTION	UNITS PER ASSY	USABLE ON CODE
		1 2 3 4 5 6 7		
1-	68151	COMPRESSOR ASSY, Air, Type MB-2A, Model 4MB-2A	1	
-1	68648	. HOSE ASSY, Air	1	
-2	2024-4-6	. ELBOW, Tube (01276) (16004 PN 23680)	1	
-3	144038	. BUSHING, Reducing (24617)	1	
-4	68420	. HOSE REEL ASSY (See figure 2)	1	
-5	MS51922-17	. NUT, Lock (AP) (96906) (16004 PN 443335)	4	
-6	MS90725-62	. SCREW, Cap (AP) (96906) (16004 PN 122145)	4	
-7	MS27183-14	. WASHER, Flat (AP) (96906) (16004 PN 120394)	4	
-8	68981	. BRACKET, Reel mounting	1	
-9	75-421	. CONNECTOR, Conduit, 45° (30119) (16004 PN 68415)	2	A
-9	ST4550	. ALTERNATE (03743)	2	A
-10	192089	. COUPLING, Pipe (24617)	1	A
-11	51066	. CONDUIT, Flexible, 18 in. lg.	1	A
-12	75-423	. CONNECTOR, Conduit, 45° (30119) (16004 PN 67372)	1	
-12	ST45100	. ALTERNATE (03743)	1	
-13	75-223	. CONNECTOR, Conduit, straight (30119) (16004 PN 67371)	1	
-13	ST100	. ALTERNATE (03743)	1	
-14	67369	. CONDUIT, Flexible, 20 in. lg.	1	
-15	179625	. TEE, Pipe (24617)	1	A
-15.1	179535	. ELBOW, Pipe, reducing (24617)	1	B
-16	MS51953-97	. NIPPLE, Pipe, close (96906)	1	
		(16004 PN 192470)	1	
-17	BL75	. NUT, Conduit (03743) (16004 PN 64821)	1	
-18	EYS31	. FITTING, Seal (15235) (16004 PN 67365)	1	
-18	EYB4	. ALTERNATE (73389)	1	
-19	MS39230-6	. ELBOW, Pipe, street (96906) (16004 PN 127792)	1	
-20	MS51953-121	. NIPPLE, Pipe, close (96906) (16004 PN 127878)	1	
-21	68413	. TUBE ASSY, Control box to receiver	1	
-22	B7405X4X4	. ELBOW, Tube (79470) (16004 PN 28842)	1	
-23	51065	. CABLE ASSY, Main power, 144 in. lg.	1	
-24	CGB-398	. CONNECTOR, Cable (15235) (16004 PN 67362)	1	
-25	68632	. PLATE, Instruction	1	
-26	145372	. SCREW, Drive (AP) (24617)	4	
-27	68631	. PLATE, Wiring diagram	1	
-28	145372	. SCREW, Tapping (AP) (24617)	4	
-29	68527	. PLATE, Indicator, input voltage	1	
-30	9426053	. SCREW, Self-tapping (AP) (24617)	2	
-31	68152	. CONTROL BOX ASSY, Motor (see figure 3)	1	
-32	MS51922-17	. NUT, Lock (AP) (96906) (16004 PN 443335)	4	
-33	MS27183-14	. WASHER, Flat (AP) (96906) (16004 PN 120394)	6	
-34	MS90725-65	. SCREW, Cap (AP) (96906) (16004 PN 122168)	4	
-35	27796	. GAUGE, Air pressure	2	
-36	66885	. SERVICE OUTLET ASSY (See figure 4)	1	
-37	MS51922-1	. NUT, Lock (AP) (96906) (16004 PN 443331)	1	
-38	MS90725-6	. SCREW, Cap (AP) (96906) (16004 PN 121887)	1	
-39	68649	. TUBE ASSY, Aftercooler to receiver	1	
-39A	69X6	. ELBOW, Tube (79470) (16004 PN 28389)	1	
-40	68650	. TUBE ASSY, Compressor discharge to aftercooler	1	
-41	69X6X8	. ELBOW, Tube (79470) (16004 PN 27691)	1	
-42	CC-0609	. CLAMP, Tube (AP) (75272) (16004 PN 11032)	1	
-43	MS51922-1	. NUT, Lock (AP) (96906) (16004 PN 443331)	1	
-44	MS90725-3	. SCREW, Cap (AP) (96906) (16004 PN 120706)	1	
-45	28599	. CLAMP, Grill	1	
-46	28601	. CLAMP, Grill	1	

FIG. & INDEX NO.	PART NUMBER	DESCRIPTION	UNITS PER ASSY	USABLE ON CODE
		1 2 3 4 5 6 7		
1-47	MS51922-1	. NUT, Lock (AP) (96906) (16004 PN 443331)	4	
-48	MS90725-13	. SCREW, Cap (AP) (96906) (16004 PN 121940)	4	
-49	67919	. WASHER, Flat (AP)	4	
-50	27715	. SPACER, Grill (AP)	4	
-51	68422	. GRILL, Aftercooler	1	
-52	68419	. AFTERCOOLER	1	
-53	68154	. SHROUD, Fan	1	
-54	MS51922-1	. NUT, Lock (AP) (96906) (16004 PN 443331)	4	
-55	MS90725-3	. SCREW, Cap (AP) (96906) (16004 PN 120706)	4	
-56	68155	. GUARD, Fan	1	
-57	MS51922-1	. NUT, Lock (AP) (96906) (16004 PN 443331)	4	
-58	28151	. FAN, Aftercooler	1	
-59	MS90725-32	. SCREW, Cap (AP) (96906) (16004 PN 122007)	4	
-60	MS35333-41	. WASHER, Lock (AP) (96906) (16004 PN 28147)	4	
-61	68163	. HUB, Fan	1	
-62	MS51963-67	. SETSCREW (AP) (96906) (16004 PN 120680)	1	
-63	FAC-OB	. AIR CLEANER ASSY (00736) (16004 PN 24788)	1	
	FAAOB-800	. COVER ASSY, Air cleaner (00736)	1	
	AOB-851	. BODY ASSY, Air cleaner (00736)	1	
	AOB-06	. GASKET, Air cleaner (00736)	1	
-64	25915	. ELBOW, Air cleaner	1	
-65	MS16997-61	. SCREW, Cap, sch (AP) (96906) (16004 PN 427190)	2	
-66	†26312	. GASKET, Elbow	1	
-67	A655	. DRAIN COCK, Oil cooler (79470) (16004 PN 28038)	1	
-68	68421	. GUARD, Impeller	1	
-69	132033	. SCREW, Mach, rd hd (AP) (24617)	4	
-70	MS35333-39	. WASHER, Lock (AP) (96906) (16004 PN 28150)	4	
-71	68157	. COMPRESSOR ASSY, Air (see figure 5)	1	
-72	MS51922-33	. NUT, Lock (AP) (96906) (16004 PN 443339)	4	
-73	MS90725-113	. SCREW, Cap (AP) (96906) (16004 PN 122433)	2	
-74	MS90725-114	. SCREW, Cap (AP) (96906) (16004 PN 122446)	2	
-75	26666	. IMPELLER	1	
-76	27968	. SETSCREW (AP)	2	
-77	MS20995F47.	. WIRE, Lock (AP) (96906)	AR	
-78	68158	. MOTOR ASSY, Electric (see figure 9)	1	
-79	MS51922-17	. NUT, Lock (AP) (96906) (16004 PN 443335)	4	
-80	MS27183-14	. WASHER, Flat (AP) (96906) (16004 PN 120394)	8	
-81	MS90725-64	. SCREW, Cap (AP) (96906) (16004 PN 120918)	4	
-82	MS35389-6	. TIRE, 6.90 x 9, 6 ply (96906) (16004 PN 65383/tube)	2	
-83	MS35392-52	. TUBE, Inner (96906)	2	
-84	MS24322-5	. WHEEL AND HUB ASSY (96906) (see figure 10) (16004 PN 68162) ..	2	
-85	27627	. BRAKE ASSY, Left-hand, shown (see figure 11)	1	
-86	27628	. BRAKE ASSY, Right-hand, not shown (see figure 11)	1	
-87	27630	. BOLT, Adjusting (AP)	2	
-88	MS35691-602	. NUT, Jam (AP) (96906) (16004 PN 124829)	2	
-89	MS90725-67	. SCREW, Cap (AP) (96906) (16004 PN 122188)	2	
-90	MS35338-27	. WASHER, Lock (AP) (96906) (16004 PN 120382)	2	
-91	68418	. PROP, Towbar	1	
-92	27610	. PIN, Towbar prop (AP)	1	
-93	27677	. PIN AND CHAIN ASSY (AP)	1	
	C8-18R	. PIN, Coupling (09332) (16004 PN 66582)	1	
	27655	. CHAIN, 7 inches lg	1	
	27609	. RING, Catch	1	
-94	68160	. TOWBAR ASSY	1	
-95	MS51922-25	. NUT, Lock (AP) (96906) (16004 PN 272683)	8	
-96	MS90725-89	. SCREW, Cap (AP) (96906) (16004 PN 67950)	8	
-97	600	. VALVE, Receiver drain (86107) (16004 PN 27679)	1	
-98	FIG48-1/4-220	. VALVE, Safety, receiver (34494) (16004 PN 27315)	1	
-99	A6760	. DRAIN COCK, Receiver (79470) (16004 PN 42233)	1	
-100	MS20913-16S	. PLUG, Pipe (96906) (16004 PN 219310)	2	

† - Component of kit number 28275

FIG. & INDEX NO.	PART NUMBER	DESCRIPTION							UNITS PER ASSY	USABLE ON CODE
		1	2	3	4	5	6	7		
1-101	68635*	.	DECAL, Service outlet					1	
-102	68636*	.	DECAL, Receiver bleed					1	
-103	68634*	.	DECAL, Receiver drain					1	
-104	68639*	.	DECAL, Safety valve					1	
-105	68159	.	RECEIVER ASSY, Air					1	

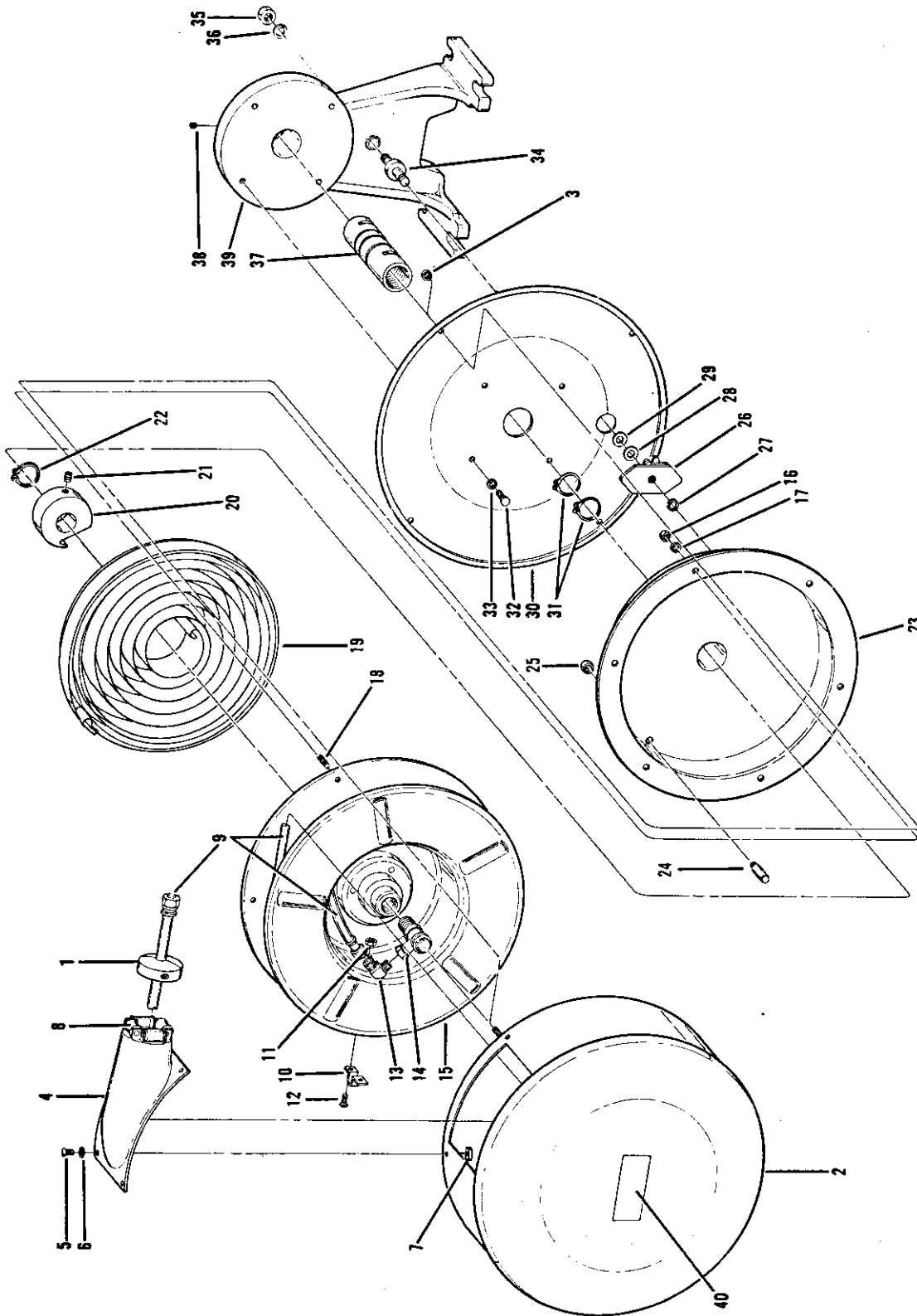


Figure 2. Hose Reel Assembly

FIG. & INDEX NO.	PART NUMBER	DESCRIPTION	UNITS PER ASSY	USABLE ON CODE
		1 2 3 4 5 6 7		
2-	68420	HOSE REEL ASSY (see figure 1-4 for NHA)	REF	
-1	68538	. BUMPER, Hose	1	
-2	68532	. COVER AND CASE ASSY	1	
-3	MS35690-405	. NUT, Hex (AP) (96906) (16004 PN 120375)	4	
-4	68535	. GUIDE, Hose	1	
-5	132903	. SCREW, Machine (AP) (24617)	4	
-6	MS35338-24	. WASHER, Lock (AP) (96906) (16004 PN 120217)	4	
-7	67120	. NUT, Plug (AP)	4	
-8	67111	. PIN AND ROLLER KIT	1	
-9	66883	. HOSE ASSY, Service	1	
-10	68534	. CLAMP, Hose (AP)	2	
-11	9411893	. NUT, Lock (AP) (24617)	4	
-12	132903	. SCREW, Machine (AP) (24617)	4	
-13	66881	. ELBOW, Street	1	
-14	66882	. JOINT, Swivel	1	
-15	68531	. SHEAVE ASSEMBLY	1	
-16	MS35650-102	. NUT, Hex (AP) (96906) (16004 PN 115295)	6	
-17	MS35338-24	. WASHER, Lock (AP) (96906) (16004 PN 120217)	6	
-18	67115	. STUD, Sheave assy	6	
-19	66880	. SPRING, Drive	1	
-20	67113	. ARBOR, Spring	1	
-21	MS51963-103	. SETSCREW, Sch (AP) (96906) (16004 PN 139414)	1	
-22	MS16624-125	. RING, Retaining (96906) (16004 PN 67109)	1	
-23	67110	. CASE AND CAM ASSY, Spring	1	
-24	67112	. STUD, Spring	1	
-25	MS35691-622	. NUT, Jam (AP) (96906) (16004 PN 124925)	1	
-26	67104	. LATCH ROTOR ASSY	1	
-27	MS16624-43	. RING, Retaining (AP) (96906) (16004 PN 67107)	1	
-28	67105	. WASHER, Spacing	1	
-29	67106	. WASHER, Spacing	1	
-30	68533	. COVER, Reel	1	
-31	MS16624-125	. RING, Retaining (AP) (96906) (16004 PN 67109)	2	
-32	MS90725-33	. SCREW, Cap (AP) (96906) (16004 PN 120229)	4	
-33	MS35338-26	. WASHER, Lock (AP) (96906) (16004 PN 120214)	4	
-34	67103	. STUD, Latch	1	
-35	MS35690-882	. NUT, Hex (AP) (96906) (16004 PN 120371)	1	
-36	MS35338-29	. WASHER, Lock (AP) (96906) (16004 PN 120384)	1	
-37	68536	. SHAFT, Reel	1	
-38	MS51963-120	. SETSCREW (AP) (96906) (16004 PN 139455)	1	
-39	68540	. BASE, Hose reel	1	
-40	68633*	. DECAL, Max pressure	1	

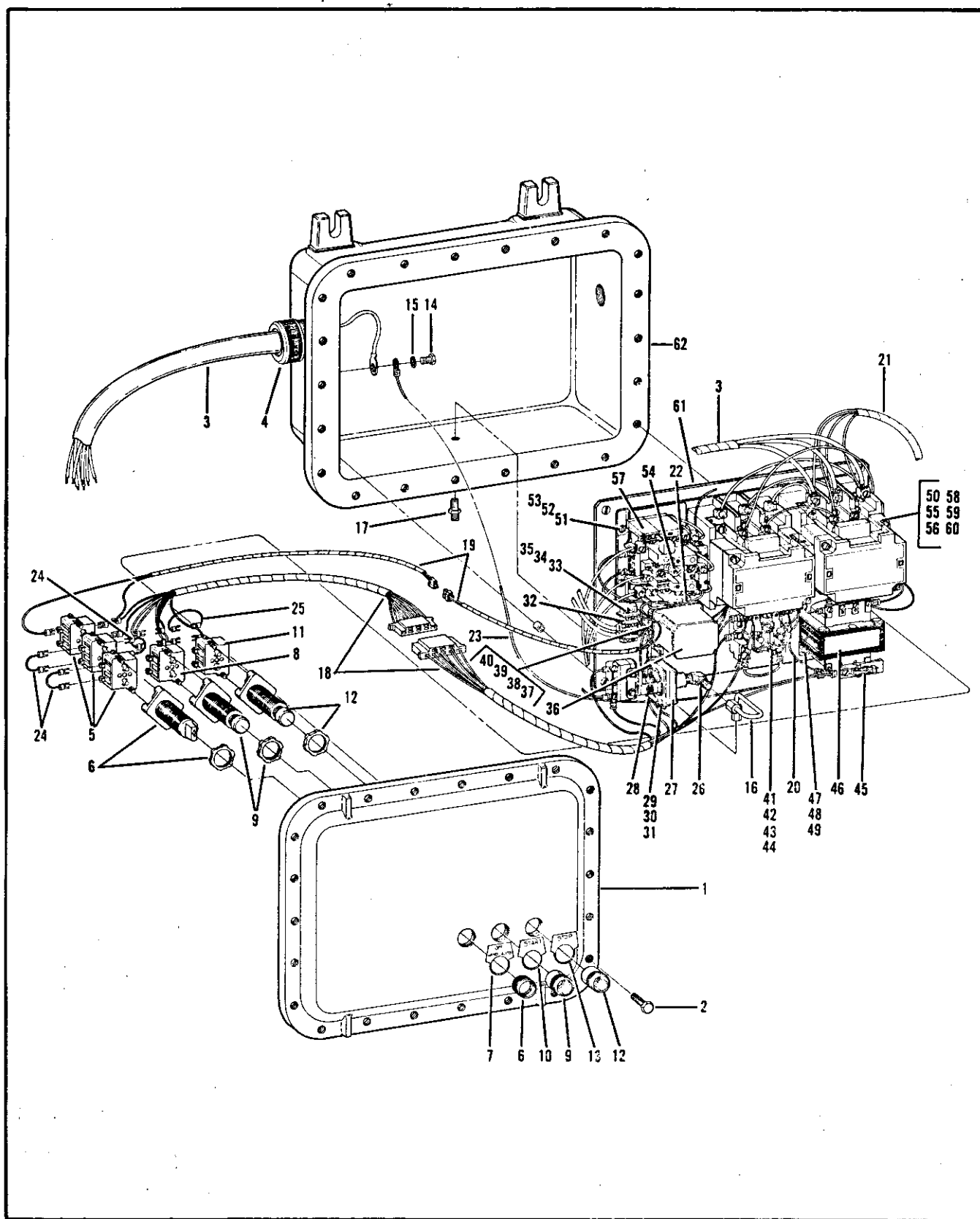


Figure 3. Motor Control Box Assembly

FIG. & INDEX NO.	PART NUMBER	DESCRIPTION	UNITS PER ASSY	USABLE ON CODE
		1 2 3 4 5 6 7		
3-	68152	CONTROL BOX ASSY, Motor (see figure 1-31 for NHA)	REF	
-1	No Number	COVER, Control box (not serviced separately, part of control box assembly 68410)	REF	
-2	MS90725-64	SCREW, Cap (AP) (96906) (supplied with control box assembly 68410)	22	
-3	51065	CABLE ASSY, Main power (see figure 1-23 for NHA)	REF	
-4	CGB-398	CONNECTOR, Cable (15235) (see figure 1-24 for NHA)	REF	
-5	10250T2	CONTACT BLOCK ASSY (27191) (16004 PN 68122)	3	
-6	XHSSSPOSN3CAM3	SWITCH, Selector (73389) (16004 PN 68164)	1	
-7	XNP-HANDOFFAUTO	PLATE, Instruction (73389) (16004 PN 68112)	1	
-8	10250T2	CONTACT BLOCK ASSY (27191) (16004 PN 68122)	1	
-9	XHPBS	SWITCH, Pushbutton, start (73389) (16004 PN 68165)	1	
-10	XNP-START	PLATE, Instruction (73389) (16004 PN 67381)	1	
-11	10250T3	CONTACT BLOCK ASSY (27191) (16004 PN 68123)	1	
-12	XHPBS	SWITCH, Pushbutton, stop (73389) (16004 PN 68165)	1	
-13	XNP-STOP	PLATE, Instruction (73389) (16004 PN 67382)	1	
-14	273771	SCREW, Cap, ground (24617)	1	
-15	67919	WASHER, Flat	1	
-16	68637	TUBE ASSY, Pressure switch	1	
-17	7325X4	UNION, Bulkhead (79470) (16004 PN 28839)	1	
-18	66954	HARNESS, Wiring	1	
	480174-1	BODY, Connector, 8 contact (04618) (16004 PN 68194)	1	
	480173-1	BODY, Connector, 8 contact (04618) (16004 PN 68195)	1	
-19	66955	HARNESS, Wiring	1	
	2965454	BODY, Connector, 2 contact (77060) (16004 PN 68798)	1	
	2965461	BODY, Connector, 2 contact (77060) (16004 PN 68799)	1	
-20	66956	HARNESS, Wiring	1	
-21	66957	HARNESS, Wiring	1	
-22	66958	WIRE ASSEMBLY	1	
-23	67629	WIRE ASSY, Ground	1	
-24	59138R	WIRE, Bulk, blue, 14 ga, 3-1/2 in. lg (77060) (16004 PN 50990)	3	
-25	59141R	WIRE, Bulk, orange, 14 ga, 3-1/2 in. lg (77060) (16004 PN 50958)	1	
	68731	MOUNTING BOARD ASSEMBLY	1	
-26	B7405X4X4	ELBOW, Tube (79470) (16004 PN 28842)	1	
-27	EIS-H250-P4	SWITCH, Pressure (89326) (16004 PN 68408)	1	
-28	68276	BRACKET, Mtg, pressure switch	1	
-29	MS35650-102	NUT, Hex (AP) (96906) (16004 PN 115295)	2	
-30	MS35338-24	WASHER, Lock (AP) (96906) (16004 PN 120217)	2	
-31	120910	SCREW, Mach, rh (AP) (24617)	2	
-32	3-141	BLOCK, Terminal (71785) (16004 PN 68424)	1	
-33	MS35649-62	NUT, Hex (AP) (96906) (16004 PN 114524)	2	
-34	MS35338-22	WASHER, Lock (AP) (96906) (16004 PN 131044)	2	
-35	132711	SCREW, Mach, rh (AP) (24617)	2	
-36	253	RELAY, Phase sensing (51741) (16004 PN 67378)	1	
-37	146-103	BASE, Octal (02660) (16004 PN 68107)	1	
-38	MS35649-62	NUT, Hex (AP) (96906) (16004 PN 114524)	2	
-39	MS35338-22	WASHER, Lock (AP) (96906) (16004 PN 131044)	2	
-40	132711	SCREW, Mach, rh (AP) (24617)	2	
-41	PRD7AYO	RELAY, Control (77342) (16004 PN 67377)	1	
-42	MS35649-82	NUT, Hex (AP) (96906) (16004 PN 114658)	2	
-43	MS35338-23	WASHER, Lock (AP) (96906) (16004 PN 121841)	2	
-44	132776	SCREW, Mach, rh (AP) (24617)	2	
-45	C340FBI	FUSE, 1-Amp (27192)	1	
-46	C340DNG	TRANSFORMER (27192) (16004 PN 68409)	1	
-47	MS35650-102	NUT, Hex (AP) (96906) (16004 PN 115295)	4	
-48	MS35338-24	WASHER, Lock (AP) (96906) (16004 PN 120217)	4	
-49	120910	SCREW, Mach, rh (AP) (24617)	4	
-50	A51CNVOA	STARTER, Motor (27192) (16004 PN 68411)	1	
-51	MS35650-102	NUT, Hex (AP) (96906) (16004 PN 115295)	3	
-52	MS35338-24	WASHER, Lock (AP) (96906) (16004 PN 120217)	3	

FIG. & INDEX NO.	PART NUMBER	DESCRIPTION							UNITS PER ASSY	USABLE ON CODE
		1	2	3	4	5	6	7		
3-53	120910	.	.	.	SCREW, Mach, rh (A2) (21617)				3	
-54	H1035	.	.	.	COIL, Heater, 460-volt (27192) (16004 PN 66964)				3	
	H1042	.	.	.	COIL, Heater, 230-volt (27192) (16004 PN 66965)				3	
-55	6-23-2	.	.	.	CONTACT SET (27192)				1	
-56	9-1888-2	.	.	.	COIL, Magnet (27192)				1	
-57	10-3523-3	.	.	.	RELAY, Overload (27192)				1	
-58	23-3522	.	.	.	CARRIER, Contact (27192)				1	
-59	17-8911	.	.	.	FRAME, Magnet (27192)				1	
-60	48-1019	.	.	.	LEVER, Armature (27192)				1	
-61	68423	.	.	.	BOARD, Mounting				1	
-62	63410	.	.	.	BOX ASSEMBLY, Control				1	

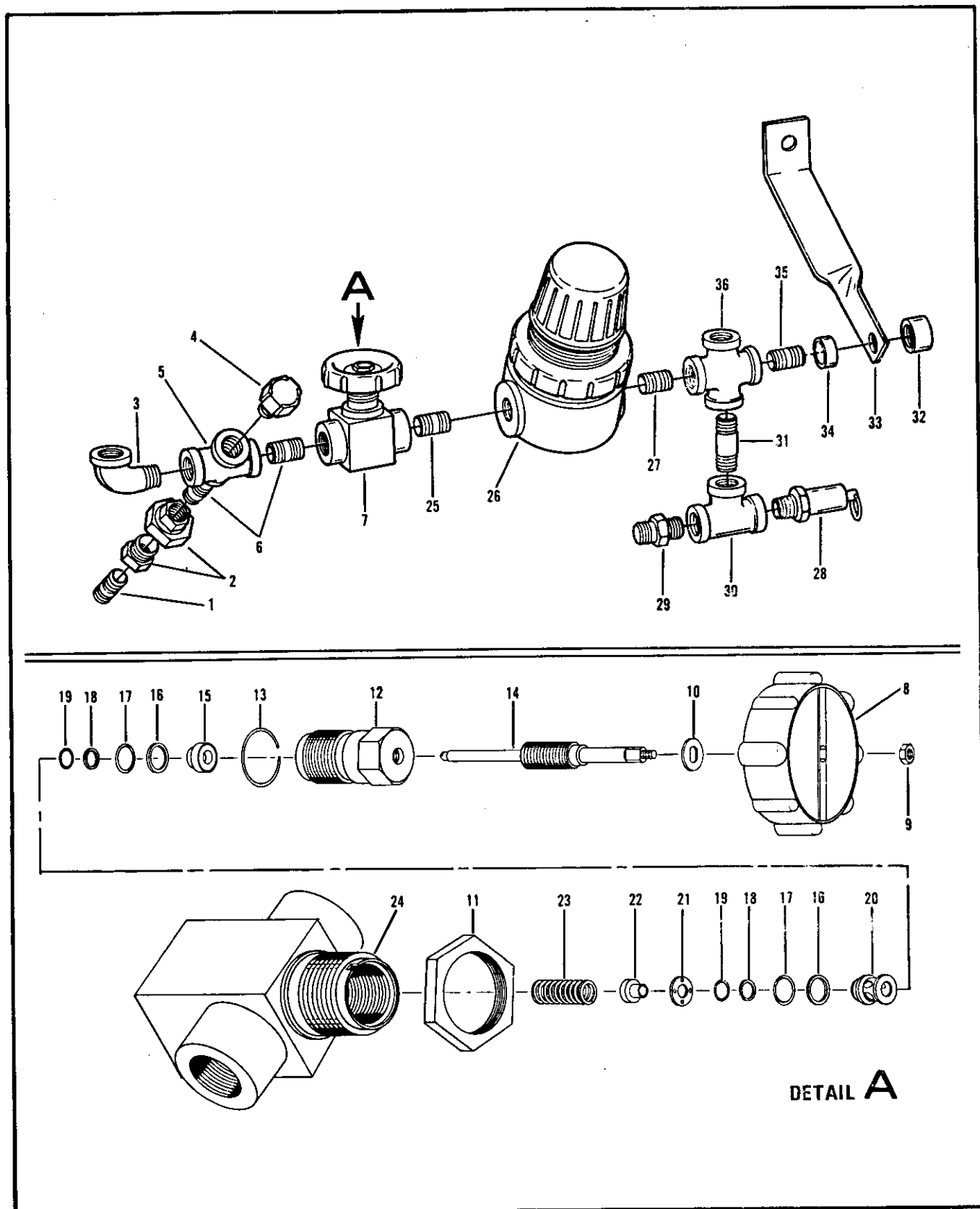


Figure 4. Service Outlet Assembly

FIG. & INDEX NO.	PART NUMBER	DESCRIPTION 1 2 3 4 5 6 7	UNITS PER ASSY	USABLE ON CODE
4-	66885	SERVICE OUTLET ASSY (See figure 1-36 for NHA)	REF	
-1	MS51953-25	. NIPPLE, Pipe, close (96906) (16004 PN 192050)	1	
-2	67869	. UNION, Pipe	1	
-3	MS39230-2	. ELBOW, Street, 90° (96906) (16004 PN 144112)	1	
-4	27615	. VALVE, Safety, rupture disc	1	
-5	144151	. CROSS, Pipe (24617)	1	
-6	MS51953-25	. NIPPLE, Pipe, close (96906) (16004 PN 192050)	2	
-7	949T-2PP(P)	. VALVE, Shutoff (91816) (16004 PN 65372)	1	
		(repair kit available)		
-8	A10926AZY	. . HANDLE, Valve (91816)	1	
-9	6521SC	. . NUT, Handle (AP) (91816)	1	
-10	1940SC	. . WASHER, Handle (91816)	1	
-11	6524SC	. . NUT, Mounting (91816)	1	
-12	A12914B	. . NUT, Gland (91816)	1	
-13	9045-700	. . RING, Retaining (91816)	1	
-14	A12906T	. . STEM, Valve (91816)	1	
-15	12912T	. . SPACER, Valve (91816)	1	
-16	†1958L	. . RING, Backup (91816)	2	
-17	†4013-49	. . PACKING, Preformed, o-ring (91816)	2	
-18	†A1939L	. . RING, Backup (91816)	2	
-19	†5005-49	. . PACKING, Preformed, o-ring (91816)	2	
-20	12910T	. . SLEEVE, Valve (91816)	1	
-21	12913	. . WASHER, Valve (91816)	1	
-22	B12911T	. . FOLLOWER, Valve (91816)	1	
-23	A12933	. . SPRING, Valve (91816)	1	
-24	A1243TP	. . BODY, Valve (91816)	1	
	KIT949T-2PP(P)	. KIT, Repair, valve (91816)	1	
-25	MS51953-25	. NIPPLE, Pipe, close (96906) (16004 PN 192050)	1	
-26	R10-02	. REGULATOR, Air pressure, range 0-250 psi (79227)	1	
		(16004 PN 24792) (repair kits available)		
-27	MS51953-25	. NIPPLE, Pipe, close (96906) (16004 PN 192050)	1	
-28	FIG48-1/4-240	. VALVE, Safety (34494) (16004 PN 27315)	1	
-29	2021-4-6	. ADAPTER, Tube (01276) (16004 PN 24842)	1	
-30	144083	. TEE, Pipe (24617)	1	
-31	MS51953-29	. NIPPLE, Pipe (96906) (16004 PN 192052)	1	
-32	144163	. CAP, Pipe (24617)	1	
-33	67600	. BRACKET, Mounting	1	
-34	67097	. SPACER, Bracket	1	
-35	MS51953-25	. NIPPLE, Pipe, close (96906) (16004 PN 192050)	1	
-36	144151	. CROSS, Pipe (24617)	1	

† - Component of kit number KIT949T-2PP(P)

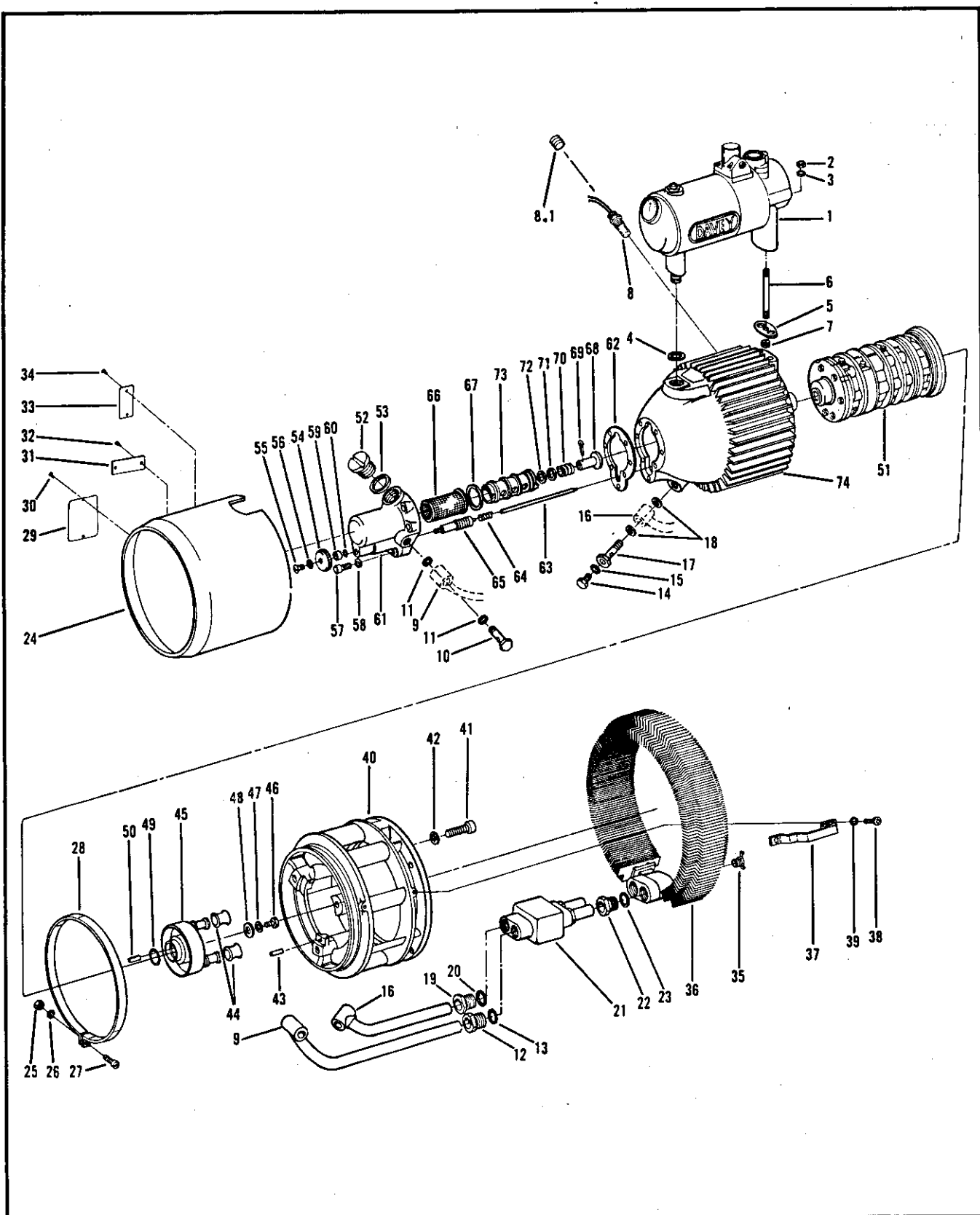


Figure 5. Air Compressor Assembly

FIG. & INDEX NO.	PART NUMBER	DESCRIPTION	UNITS PER ASSY	USABLE ON CODE
		1 2 3 4 5 6 7		
5-	68157	COMPRESSOR ASSY, Air (see figure 1-71 for NHA) (repair kit available) ..	REF	
-1	26703	. SEPARATOR ASSY, Oil (see figure 6)	1	
-2	MS35690-402	. NUT, Hex (AP) (96906) (16004 PN 120375)	1	
-3	MS35333-40	. WASHER, Lock (AP) (96906) (16004 PN 28148)	1	
-4	† 27623	. PACKING, Preformed, square section ring	1	
-5	† 25706	. GASKET, Separator	1	
-6	25941	. STUD, Separator	1	
-7	1185-4CN3-8	. INSERT, Heli-coil (01556) (16004 PN 24816)	1	
-8	68156	. SWITCH, High temp, thermostatic	1	A
-8.1	MS49005-6	. PLUG, Pipe, sch (96906) (16004 PN 143162)	1	B
-9	40774	. TUBE ASSY, Oil	1	
-10	25698	. BOLT, Tube (AP)	1	
-11	† 27625	. PACKING, Preformed, square section ring (AP)	2	
-12	25751	. SCREW, Sealing (AP)	1	
-13	† 27624	. PACKING, Preformed, square section ring (AP)	1	
-14	25705	. PLUG, Drain	1	
-15	† 24649	. PACKING, Preformed, o-ring	1	
-16	40773	. TUBE ASSY, Oil	1	
-17	25697	. BOLT, Banjo (AP)	1	
-18	† 27625	. PACKING, Preformed, square section ring (AP)	2	
-19	25751	. SCREW, Sealing (AP)	1	
-20	† 27624	. PACKING, Preformed, square section ring (AP)	1	
-21	40769	. VALVE ASSEMBLY, Thermal bypass (see figure 7)	1	
-22	25751	. SCREW, Sealing (AP)	2	
-23	† 27624	. PACKING, Preformed, square section ring (AP)	2	
-24	68295	. COWL, Oil chamber	1	
-25	MS35690-402	. NUT, Hex (AP) (96906) (16004 PN 120375)	1	
-26	MS35333-40	. WASHER, Lock (AP) (96906) (16004 PN 28148)	1	
-27	132277	. SCREW, Cap, fil hd (AP) (24617)	1	
-28	25695	. CLAMP, Cowl	1	
-29	41180	. PLATE, Name	1	
-30	144700	. SCREW, Self-tapping (AP) (24617)	2	
-31	28040	. PLATE, Instruction, oil	1	
-32	144700	. SCREW, Self-tapping (AP) (24617)	2	
-33	18806	. PLATE, Rotation	1	
-34	144700	. SCREW, Self-tapping (AP) (24617)	2	
-35	A655	. DRAIN COCK, Oil cooler (79470) (see figure 1-66 for NHA)	REF	
		(16004 PN 28038)		
-36	26654	. COOLER, Oil	1	
-37	26662	. CLAMP, Cooler (AP)	4	
-38	132033	. SCREW, Mach, rh (AP) (24617)	8	
-39	MS35333-39	. WASHER, Lock (AP) (96906) (16004 PN 28150)	8	
-40	26615	. LANTERN	1	
-41	MS16997-144	. SCREW, Cap, sch (AP) (96906) (16004 PN 9406822)	3	
-42	1224-06	. WASHER, Lock (AP) (78189) (16004 PN 28145)	3	
-43	25679	. PIN, Dowel	1	
-44	25673	. BUSHING, Drive	2	
-45	26657	. COUPLING ASSY, Drive	1	
	25672	. . PIN, Drive	2	
	26656	. . COUPLING, Drive	1	
-46	MS90725-5	. SCREW, Cap (AP) (96906) (16004 PN 120854)	1	
-47	MS35333-40	. WASHER, Lock (AP) (96906) (16004 PN 28148)	1	
-48	25942	. WASHER, Special (AP)	1	
-49	† 24628	. PACKING, Preformed, o-ring	1	
-50	24962	. KEY	1	
-51	27775	. ROTOR-STATOR ASSY (See figure 8)	1	
-52	26323	. PLUG, Oil filler	1	
-53	† 27626	. PACKING, Preformed, square section ring	1	
-54	27028	. KNOB, Adjusting	1	
-55	132830	. SCREW, Truss hd (AP) (24617)	1	

† - Component of kit number 28275

FIG. & INDEX NO.	PART NUMBER	DESCRIPTION	UNITS PER ASSY	USABLE ON CODE
		1 2 3 4 5 6 7		
5-56	MS35333-39	. WASHER, Lock (AP) (96906) (16004 PN 28150)	1	
	60469	. HOUSING ASSY, Oil filter	1	
-57	MS16997-79	. SCREW, Cap, sch (AP) (96906) (16004 PN 9421706)	7	
-58	MS35333-41 *	. WASHER, Lock (AP) (96906) (16004 PN 28147)	7	
-59	26981	. . BUSHING, Adjusting pin	1	
-60	† 24498	. . PACKING, Preformed, o-ring	1	
-61	26980	. . HOUSING, Oil filter	1	
-62	† 25707	. GASKET, Housing	1	
-63	26704	. ROD, Push	1	
-64	25686	. SPRING, Adjusting pin	1	
-65	26982	. PIN, Adjusting	1	
-66	25688	. FILTER, Oil	1	
-67	† 25689	. SEAL, Oil filter	1	
-68	25690	. CONNECTOR	1	
-69	MS24665-283	. PIN, Cotter (AP) (96906) (16004 PN 121222)	1	
-70	25693	. SPRING, Connector	1	
-71	25692	. COLLAR	1	
-72	† 25691	. SEAL	1	
-73	25687	. SUPPORT, Oil filter	1	
-74	68416	. CHAMBER, Oil	1	
	28275	KIT, Overhaul, compressor, complete air end	1	
	* 1218-02	. WASHER, Lock (AP) (78189)	7	

† - Component of kit number 28275

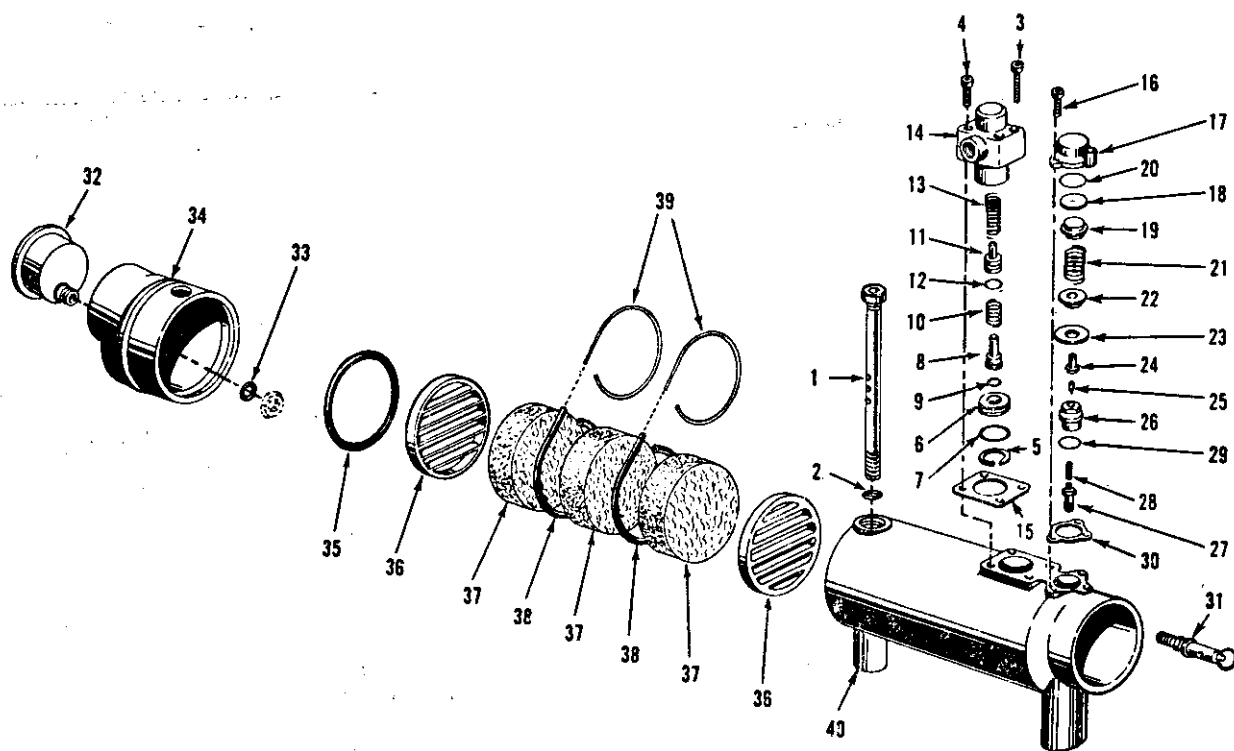


Figure 6. Oil Separator Assembly

FIG. & INDEX NO.	PART NUMBER	DESCRIPTION 1 2 3 4 5 6 7	UNITS PER ASSY	USABLE ON CODE
6-	26703	SEPARATOR ASSEMBLY, Oil (see figure 5-1 for NHA)	REF	
-1	25725	. BOLT, Separator.	1	
-2	†24505	. PACKING, Preformed, o-ring	1	
	26346	. VALVE ASSY, Minimum pressure	1	
-3	MS16997-61	. SCREW, Cap, sch (AP) (96906) (16004 PN 427190)	2	
-4	MS16997-63	. SCREW, Cap, sch (AP) (96906) (16004 PN 454480)	2	
-5	MS16625-100	. . RING, Retaining (96906) (16004 PN 24803)	1	
-6	26340	. . SEAT, Valve	1	
-7	†24506	. . PACKING, Preformed, o-ring	1	
-8	26339	. . PISTON, Valve	1	
-9	26341	. . SEAL, Piston	1	
-10	26488	. . SPRING, Piston	1	
-11	25975	. . PISTON, Valve	1	
-12	†24649	. . PACKING, Preformed, o-ring	1	
-13	26343	. . SPRING, Piston	1	
-14	26342	. . HOUSING, Discharge elbow	1	
-15	†25730	. GASKET, Housing	1	
	28320	. VALVE ASSEMBLY, Bleeder	1	
-16	MS16997-60	. SCREW, Cap, sch (AP) (96906) (16004 PN 426816)	2	
-17	25747	. . COVER, Valve	1	
-18	25746	. . WINDOW, Valve	1	
-19	25744	. . DISH, Valve	1	
-20	24794	. . PACKING, Preformed, o-ring	1	
-21	25749	. . SPRING, Piston	1	
-22	25740	. . PISTON, Valve	1	
-23	25745	. . DIAPHRAGM, Valve	1	
-24	25742	. . NOZZLE, Valve	1	
-25	25741	. . PLUNGER, Valve	1	
-26	26670	. . SEAT, Valve	1	
-27	26672	. . FILTER ASSEMBLY	1	
-28	26671	. . VALVE, Bleeder	1	
-29	†24562	. . PACKING, Preformed, o-ring	1	
-30	†25743	. GASKET, Cover	1	
-31	FIG48-1/4-240	. VALVE, Safety (34494) (16004 PN 27315)	1	
	26702	. COVER ASSY, Separator	1	
-32	26701	. . GAUGE, Air pressure, with nut	1	
-33	†24627	. . PACKING, Preformed, o-ring	1	
-34	26606	. . COVER, Separator	1	
-35	†24031	. PACKING, Preformed, o-ring	1	
-36	25724	. GRID, Felt	2	
-37	25722	. FELT, Separator	3	
-38	†25852	. SEAL, Felt	2	
-39	25853	. WIRE, Seal	2	
-40	25726	. HOUSING, Separator	1	

† - Component of kit number 28275

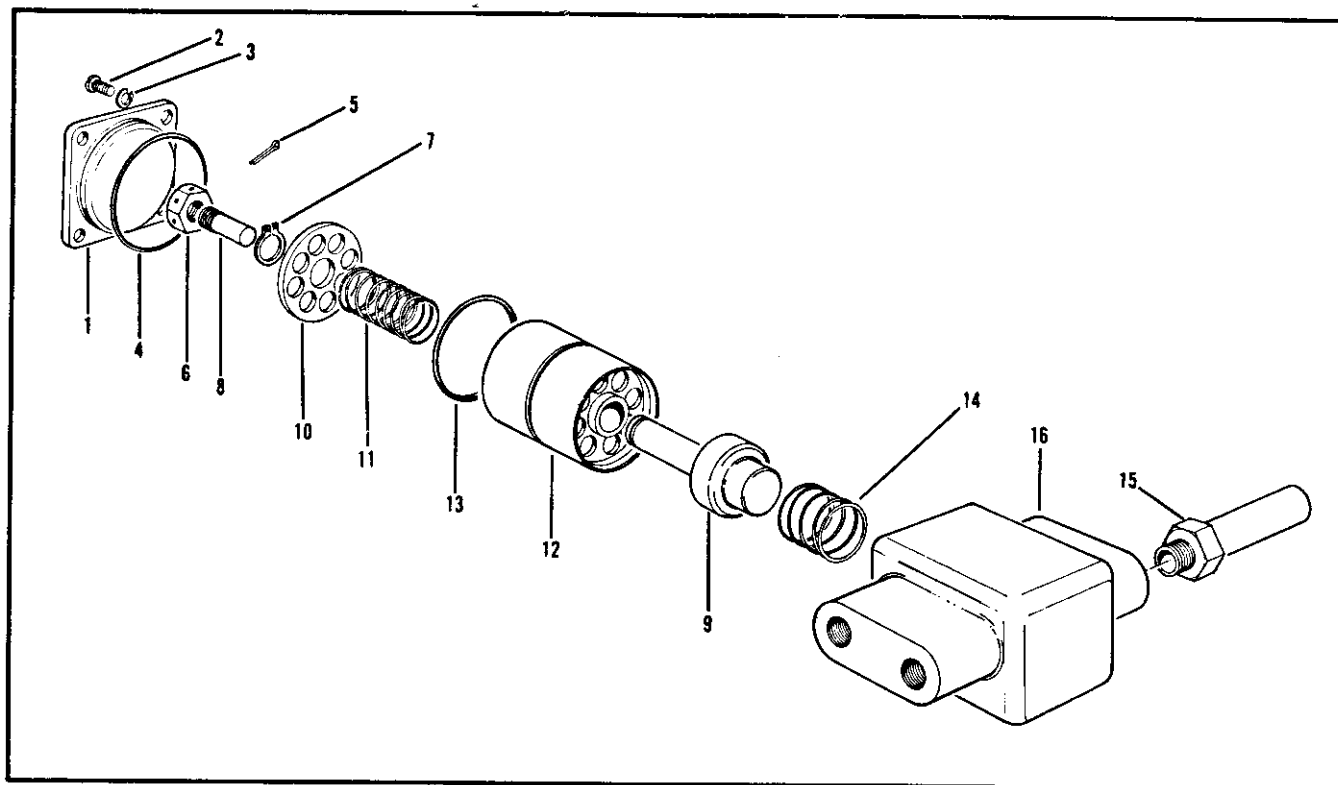


Figure 7. Thermal Bypass Valve Assembly

FIG. & INDEX NO.	PART NUMBER	DESCRIPTION							UNITS PER ASSY	USABLE ON CODE
		1	2	3	4	5	6	7		
7-	40769	VALVE ASSEMBLY, Thermal bypass (see figure 5-21 for NHA)							REF	
-1	40759	COVER, Valve							1	
-2	132830	SCREW, Mach, rh (AP) (24617)							4	
-3	MS35338-24	WASHER, Lock (AP) (96906) (16004 PN 120217).....							4	
-4	† 40805	PACKING, Preformed, o-ring							1	
	40762	SHUTTLE ASSEMBLY							1	
-5	MS24665-134	PIN, Cotter (96906) (16004 PN 121223)							1	
-6	40666	NUT, Adjusting							1	
-7	MS16624-39	RING, Retaining (96906) (16004 PN 16037)							1	
-8	40665	PLUNGER							1	
-9	40764	ELEMENT, Power							1	
-10	40761	GUIDE, Element							1	
-11	40766	SPRING, Shuttle							1	
-12	40760	SHUTTLE							1	
-13	† 29061	PACKING, Preformed, o-ring							1	
-14	40767	SPRING, Power element							1	
-15	40768	TUBE ASSY							2	
-16	40758	BODY, Valve, thermal bypass							1	

† - Component of kit number 28275

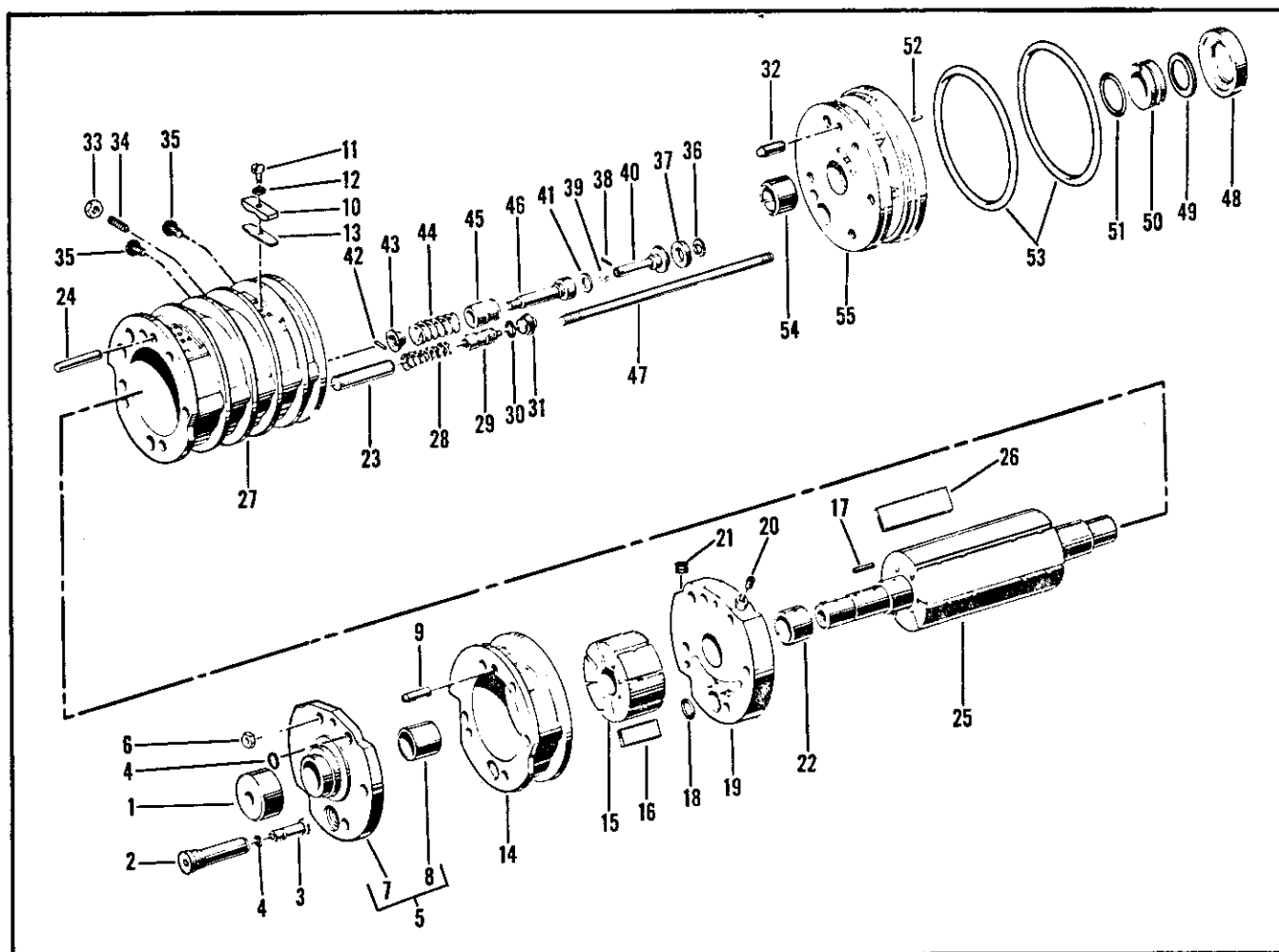


Figure 8. Rotor-Stator Assembly

FIG. & INDEX NO.	PART NUMBER	DESCRIPTION							UNITS PER ASSY	USABLE ON CODE
		1	2	3	4	5	6	7		
8-	27775	ROTOR-STATOR ASSY (see figure 5-51 for NHA) (repair kit available)							REF	
-1	26697	. CAP, Stator							1	
-2	26646	. BUSHING, Plunger							1	
-3	26647	. PLUNGER							1	
-4	††24497	. PACKING, Preformed, o-ring							2	
-5	26613	. COVER ASSY, Non-drive end							1	
-6	MS51922-1	. NUT, Lock (AP) (96906) (16004 PN 443331)							5	
-7	No Number	. . COVER, End (not procurable separately)							1	
-8	†††24495	. . BEARING, End cover							1	
-9	24965	. DOWEL							2	
-10	26644	. GUARD, Valve							3	
-11	120687	. SCREW, Fil hd (AP) (24617)							3	
-12	MS35333-39	. WASHER, Lock (AP) (96906) (16004 PN 28150)							3	
-13	26643	. VALVE, Reed							3	
-14	26694-1	. STATOR, Second stage, 1.5015-1.5010 in. (use with group -1 rotor and group -1 blades)							1	
	26694-2	. STATOR, Second stage, 1.5020-1.5015 in. (use with group -2 rotor and group -2 blades)							1	
	26694-3	. STATOR, Second stage, 1.5025-1.5020 in. (use with group -3 rotor and group -3 blades)							1	
	26694-4	. STATOR, Second stage, 1.5030-1.5025 in. (use with group -4 rotor and group -4 blades)							1	

†† - Component of kit number 41375

††† - Component of kit number 42337

FIG. & INDEX NO.	PART NUMBER	DESCRIPTION							UNITS PER ASSY	USABLE ON CODE
		1	2	3	4	5	6	7		
8-15	26705-1	.	ROTOR, Second stage, 1.4975-1.4970 in.						1	
			(use with group -1 stator and group -1 blades)							
	26705-2	.	ROTOR, Second stage, 1.4980-1.4975 in.						1	
			(use with group -2 stator and group -2 blades)							
	26705-3	.	ROTOR, Second stage, 1.4985-1.4980 in.						1	
			(use with group -3 stator and group -3 blades)							
	26705-4	.	ROTOR, Second stage, 1.4990-1.4985 in.						1	
			(use with group -4 stator and group -4 blades)							
-16	26867-1	.	BLADE, Set of 8, second stage, 1.4970-1.4965 in.						1	
			(use with group -1 stator and group -1 rotor)							
	26867-2	.	BLADE, Set of 8, second stage, 1.4975-1.4970 in.						1	
			(use with group -2 stator and group -2 rotor)							
	26867-3	.	BLADE, Set of 8, second stage, 1.4980-1.4975 in.						1	
			(use with group -3 stator and group -3 rotor)							
	26867-4	.	BLADE, Set of 8, second stage, 1.4985-1.4980 in.						1	
			(use with group -4 stator and group -4 rotor)							
-17	24962	.	KEY, Rotor, second stage						1	
-18	††24505	.	PACKING, Preformed, o-ring						1	
-19	27776	.	PLATE ASSY, Division						1	
-20	MS51981-46	.	SETSCREW, Sch (96906) (16004 PN 182926)						1	
-21	139515	.	SETSCREW, Sch (24617)						1	
-22	†††24496	.	BEARING, Division plate						1	
-23	26698	.	SPACER						1	
-24	24966	.	DOWEL						2	
-25	26616-5	.	ROTOR, First stage, 5.3730-5.3725 in.						1	
			(use with group -5 stator and group -1 blade)							
	26616-6	.	ROTOR, First stage, 5.3735-5.3730 in.						1	
			(use with group -6 stator and group -2 blade)							
	26616-7	.	ROTOR, First stage, 5.3740-5.3735 in.						1	
			(use with group -7 stator and group -3 blade)							
	26616-8	.	ROTOR, First stage, 5.3745-5.3740 in.						1	
			(use with group -8 stator and group -4 blade)							
-26	26866-1	.	BLADE, Set of 12, first stage, 2.6857-2.6852 in.						1	
			(use with group -5 rotor and group -5 stator)							
	26866-2	.	BLADE, Set of 12, first stage, 2.6862-2.6857 in.						1	
			(use with group -6 rotor and group -6 stator)							
	26866-3	.	BLADE, Set of 12, first stage, 2.6867-2.6862 in.						1	
			(use with group -7 rotor and group -7 stator)							
	26866-4	.	BLADE, Set of 12, first stage, 2.6872-2.6867 in.						1	
			(use with group -8 rotor and group -8 stator)							
-27	27777-5	.	STATOR, First stage, 5.3765-5.3760 in.						1	
			(use with group -5 rotor and group -1 blade)							
	27777-6	.	STATOR, First stage, 5.3770-5.3765 in.						1	
			(use with group -6 rotor and group -2 blade)							
	27777-7	.	STATOR, First stage, 5.3775-5.3770 in.						1	
			(use with group -7 rotor and group -3 blade)							
	27777-8	.	STATOR, First stage, 5.3780-5.3775 in.						1	
			(use with group -8 rotor and group -4 blade)							
-28	25665	.	SPRING						1	
-29	25666	.	VALVE, Servo						1	
-30	††24498	.	PACKING, Preformed, o-ring						1	
-31	25668	.	PLUG, Servo valve						1	
-32	24965	.	DOWEL						2	
-33	MS35690-402	.	NUT, Hex (96906) (16004 PN 120375)						1	
-34	25718	.	SCREW, Bushing lock						1	
-35	27858	.	SCREW, Sealing						2	
	26639	.	VALVE ASSY, Non-return						1	
-36	X5133-31	.	RING, Retaining (79136) (16004 PN 26642)						1	
-37	25715	.	SEAT, Valve						1	

†† - Component of kit number 41375

††† - Component of kit number 42337

FIG. & INDEX NO.	PART NUMBER	DESCRIPTION							UNITS PER ASSY	USABLE ON CODE
		1	2	3	4	5	6	7		
	26641	.	.	STEM ASSY, Valve	1	
8-38	MS9047-003	.	.	PIN, Spring (96906) (16004 PN 41888)	1	
-39	41887	.	.	BALL, Steel	1	
-40	41879	.	.	STEM, Valve	1	
-41	25713	.	.	WASHER, Valve	1	
	26262	.	.	VALVE ASSEMBLY, Unloader	1	
-42	25708	.	.	PIN	1	
-43	25709	.	.	STOP, Spring	1	
-44	25711	.	.	SPRING, Unloader valve	1	
-45	25712	.	.	SLEEVE, Valve	1	
-46	25710	.	.	PISTON, Unloader valve	1	
-47	26206	.	.	STUD	5	
-48	††24501	.	.	SEAL, Oil	1	
-49	††26337	.	.	WASHER, Fiber, thrust	1	
-50	26336	.	.	SLEEVE, Sealing	1	
-51	††24502	.	.	PACKING, Preformed, o-ring	1	
-52	MS9047-098	.	.	PIN, Spring (96906) (16004 PN 24576)	1	
-53	††24500	.	.	PACKING, Preformed, o-ring	2	
-54	†††24496	.	.	BEARING, Cover, drive end	1	
-55	25653	.	.	COVER, Drive end	1	
	†41375	.	.	KIT, Repair, rotor-stator	1	
	42337	.	.	KIT, Repair, bearing	1	

† - Component of kit number 28275

†† - Component of kit number 41375

††† - Component of kit number 42337

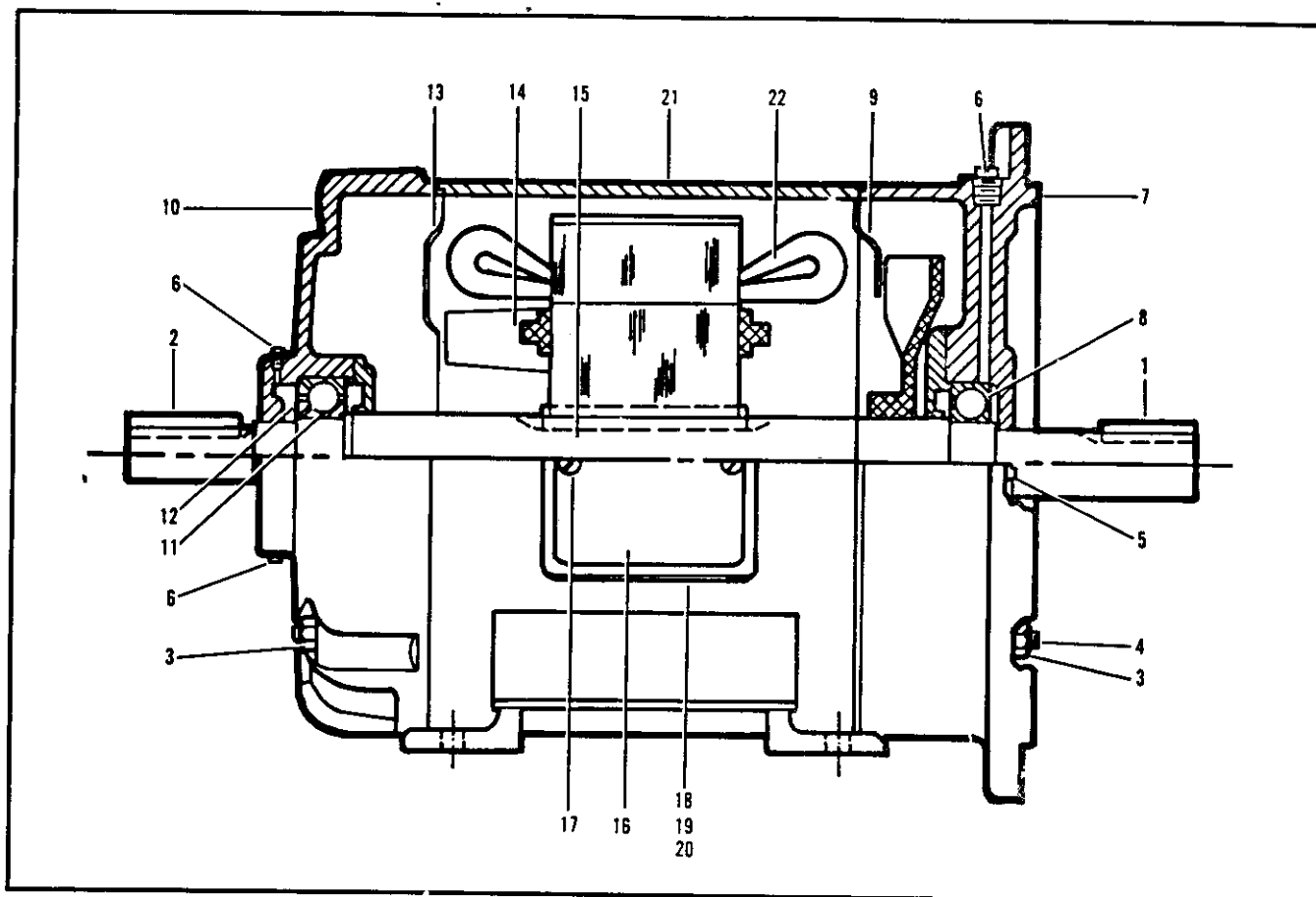


Figure 9. Electric Motor Assembly

FIG. & INDEX NO.	PART NUMBER	DESCRIPTION							UNITS PER ASSY	USABLE ON CODE
		1	2	3	4	5	6	7		
9-	68158	MOTOR ASSY, Electric (see figure 1-78 for NHA)							REF	
-1	MS20066-257	. KEY, Mach, sq (96906) (38151 PN E8090-8)							1	
-2	MS20066-188	. KEY, Mach, sq (96906) (38151 PN E5890-20)							1	
-3	A7551-9S	. NUT, Stud bolt (38151)							8	
-4	A60128B-39S	. BOLT, Stud (38151)							4	
-5	E7514-125S	. SCREW (38151)							2	
-6	E4850-1	. PLUG, Grease (38151)							4	
-7	AA64245A-C	. BRACKET, End (38151)							1	
-8	A7848-30	. BEARING, Shaft (38151)							1	
-9	A64116-1C	. BAFFLE (38151)							1	
-10	A64120A-C	. BRACKET, End (38151)							1	
-11	A7848-30	. BEARING, Shaft (38151)							1	
-12	A7661-30	. SPRING, Loading, brg (38151)							1	
-13	A64116-2C	. BAFFLE (38151)							1	
-14	AD84D35BA-34	. ROTOR ASSEMBLY (38151)							1	
-15	A66355-675	. SHAFT, Motor (38151)							1	
-16	B61535-A90	. COVER, Conduit box (38151)							1	
-17	E7531-37S	. SCREW, Cover (AP) (38151)							2	
-18	B61534-A90	. BOX, Conduit (38151)							1	
-19	A9646-37S	. SCREW, Box mtg (AP) (38151)							2	
-20	E61823-1	. GASKET, Conduit box (38151)							1	
-21	AAC63372-214	. BODY ASSEMBLY, Motor (38151)							1	
-22	HK1844124-6	. KIT, Stator winding (38151)							1	

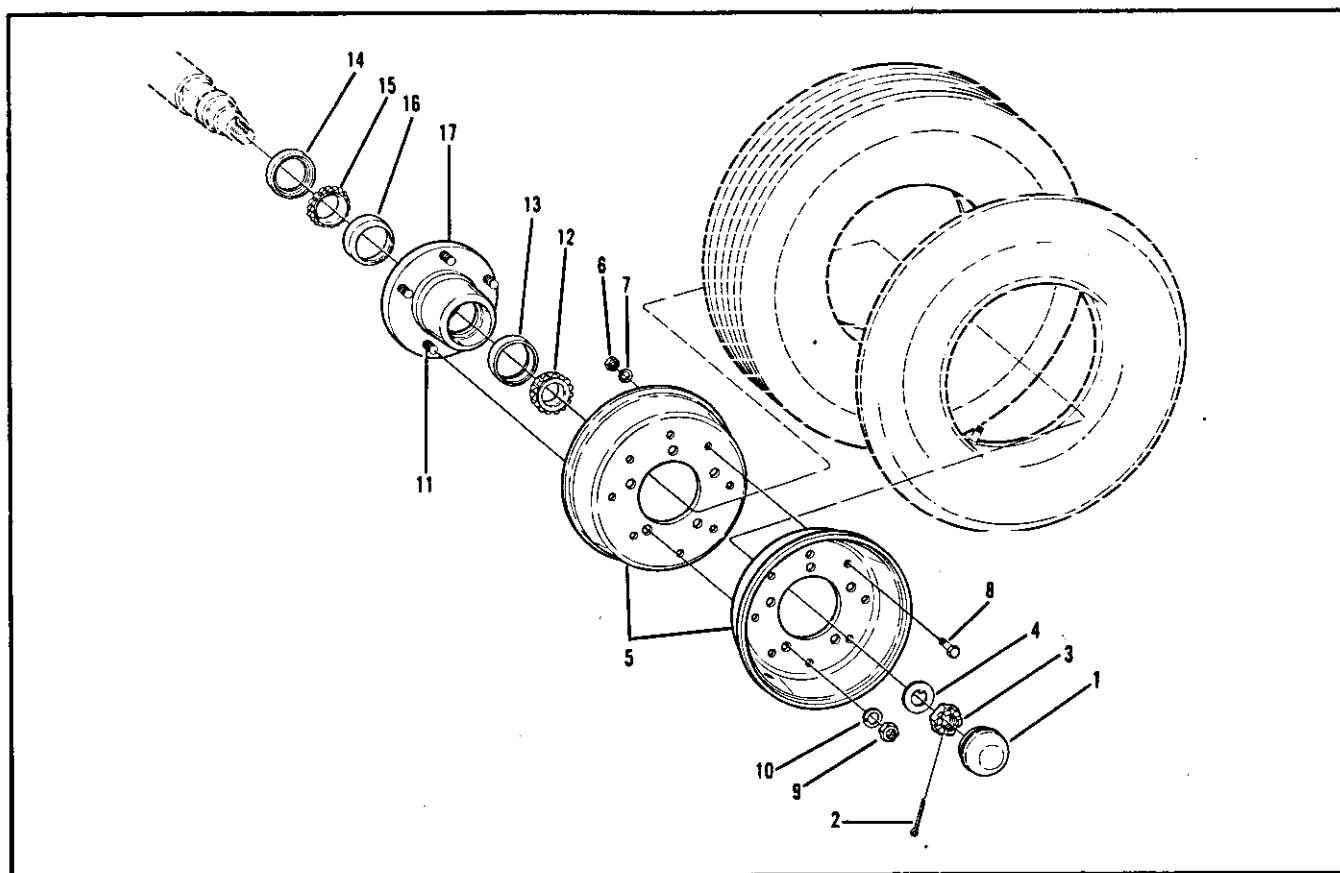


Figure 10. Wheel and Hub Assembly

FIG. & INDEX NO.	PART NUMBER	DESCRIPTION	UNITS PER ASSY	USABLE ON CODE
		1 2 3 4 5 6 7		
10-	MS24322-5	WHEEL AND HUB ASSY (96906) (16004 PN 68162)..... (see figure 1-84 for NHA)	REF	
-1	6312	. CAP, Hub (22938)	1	
-2	MS24665-360	. PIN, Cotter (AP) (96906) (16004 PN 125637)	1	
-3	AN320-16	. NUT, Spindle (AP) (88044) (16004 PN 67646)	1	
-4	4702-2	. WASHER, Spindle (AP) (22938) (16004 PN 14060)	1	
-5	MS24325-1	. WHEEL ASSEMBLY (96906)	1	
-6	MS35690-622	. . NUT, Hex (AP) (96906).....	8	
-7	MS35338-46	. . WASHER, Lock (AP) (96906).....	8	
-8	MS90726-58	. . SCREW, Cap (AP) (96906)	8	
	MS24328-1	. HUB ASSEMBLY (96906)	1	
-9	MS35690-82	. . NUT, Stud (AP) (96906)	5	
-10	MS35338-48	. . WASHER, Lock (AP) (96906)	5	
-11	6251-10	. . STUD, Wheel (AP) (22938)	5	
-12	15123	. . CONE, Brg, outer (60038)	1	
-13	15245	. . CUP, Brg, outer (60038)	1	
-14	6311	. . SEAL, Grease (22938)	1	
-15	24780	. . CONE, Brg, inner (60038)	1	
-16	24720	. . CUP, Brg, inner (60038)	1	
-17	3613	. . HUB, Wheel (22938)	1	

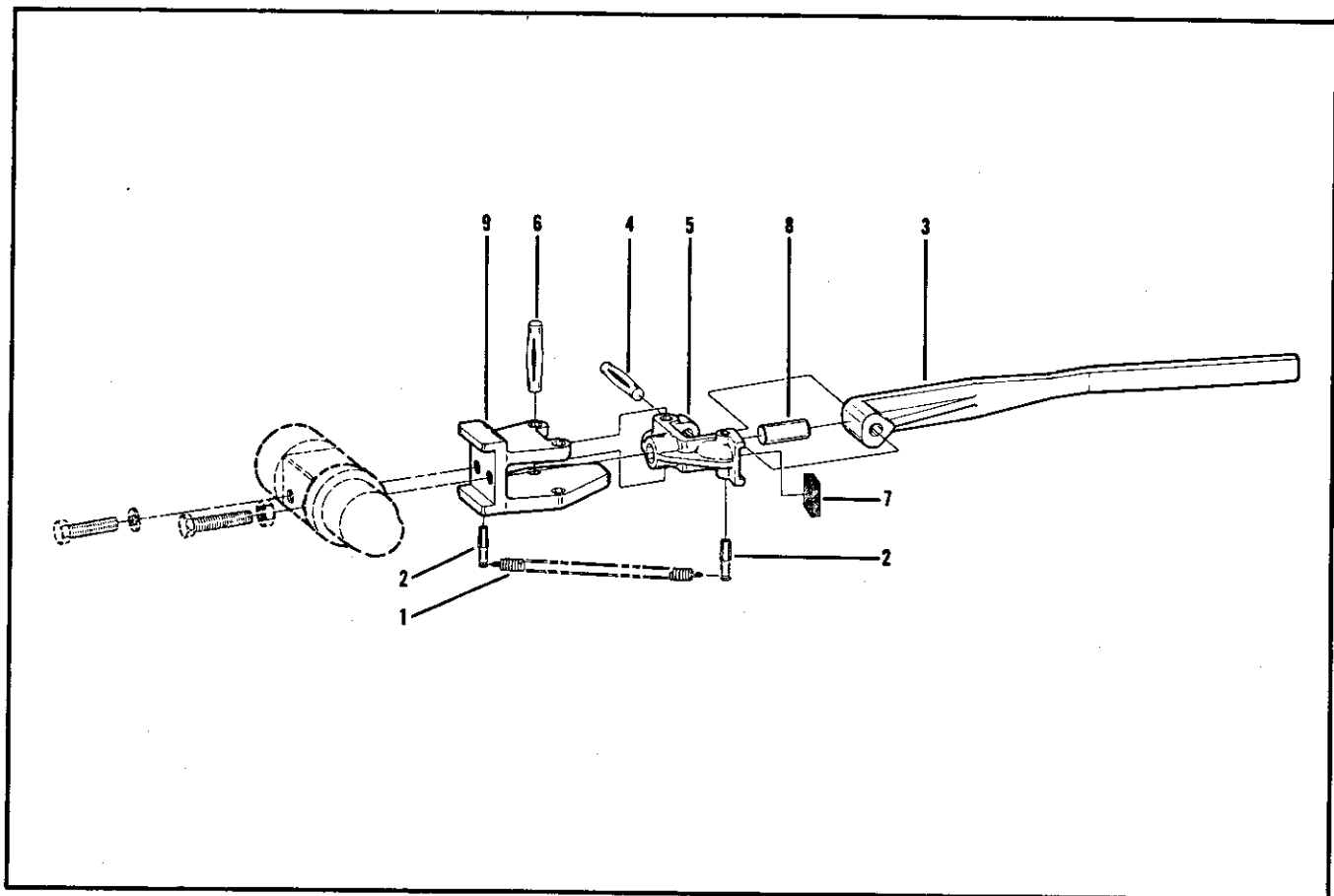


Figure 11. Brake Assembly

FIG. & INDEX NO.	PART NUMBER	DESCRIPTION							UNITS PER ASSY	USABLE ON CODE
		1	2	3	4	5	6	7		
11-	27627	BRAKE ASSY, Left-hand (shown) (see figure 1-85 for NHA)							REF	
	27628	BRAKE ASSY, Right-hand (opposite) (see figure 1-86 for NHA)							REF	
-1	27632	. SPRING, Brake							1	
-2	27631	. PIN, Anchor, spring							2	
-3	27602	. LEVER, Brake							1	
-4	27634	. PIN, Hinge (AP)							1	
-5	27593	. SHOE, Brake							1	
-6	27633	. PIN, Hinge (AP)							1	
-7	27635	. LINING, Brake							1	
-8	27629	. PLUNGER, Brake							1	
-9	27597	. BRACKET, Brake							1	

SECTION III
NUMERICAL INDEX

PART NUMBER	FIG. & INDEX NUMBER	QTY PER END ITEM	SMR	PART NUMBER	FIG. & INDEX NUMBER	QTY PER END ITEM	SMR
AAC63372-214	9-21	1	XBFZZ	FIG48-1/4-240	4-28		
AA64245A-C	9-7	1	XBFZZ		6-31		
AD84D35BA-34	9-14	1	XAFZZ	HK1844124-6	9-22	1	XBFZZ
AN320-16	10-3	2	PAFZZ	H1035	3-54	3	PAFZZ
AOB-06	F1-63	1	PAFZZ	H1042	F3-54	3	PAFZZ
AOB-851	F1-63	1	XAFZZ	KIT949T-2PP(P)	F4-24	1	PAFZZ
A10926AZY	4-8	1	XAFZZ	MS16624-125	2-22	3	PAFZZ
A1243TP	4-24	1	XAFZZ		2-31		
A12906T	4-14	1	PAFZZ	MS16624-39	7-7	1	PAFZZ
A12914B	4-12	1	XAFZZ	MS16624-43	2-27	1	PAFZZ
A12933	4-23	1	XAFZZ				
A1939L	4-18	2	KFFZZ	MS16625-100	6-5	1	PAFZZ
A51CNVOA	3-50	1	PAFFF	MS16997-144	5-41	3	PAFZZ
A60128B-39S	9-4	4	PAFZZ	MS16997-60	6-16	2	PAFZZ
A64116-1C	9-9	1	XBFZZ	MS16997-61	1-65	4	PAFZZ
A64116-2C	9-13	1	XBFZZ		6-3		
A64120A-C	9-10	1	XBFZZ	MS16997-63	6-4	2	PAFZZ
A655	1-67	1	PAFZZ	MS16997-79	5-57	7	PAFZZ
	5-35	REF		MS20066-188	9-2	1	PAFZZ
A66355-675	9-15	1	XAFZZ	MS20066-257	9-1	1	PAFZZ
A6760	1-99	1	PAFZZ	MS20913-16S	1-100	2	PAFZZ
A7551-9S	9-3	8	PAFZZ				
A7661-30	9-12	1	PAFZZ	MS20995F47	1-77	AR	XBFZZ
A7848-30	9-8	2	XBFZZ	MS24322-5	1-84	2	AFZZ
	9-11				10-	REF	
A9646-37S	9-19	2	XBFZZ	MS24325-1	10-5	2	PAFZZ
BL75	1-17	1	PAFZZ	MS24328-1	F10-8	2	PAFBZ
B12911T	4-22	1	XAFZZ	MS24665-134	7-5	1	PAFZZ
B61534-A90	9-18	1	PAFZZ	MS24665-283	5-69	1	PAFZZ
B61535-A90	9-16	1	PAFZZ	MS24665-360	10-2	2	PAFZZ
B7405X4X4	1-22	2	PAFZZ	MS27183-14	1-7	18	PAFZZ
	3-26				1-33		
					1-80		
CC-0609	1-42	1	PAFZZ				
OGB-398	1-24	1	PAFZZ	MS35333-39	1-70	16	PAFZZ
	3-4	REF			5-39		
					5-56		
					8-12		
C340DNG	3-46	1	PAFZZ	MS35333-40	5-3	3	PAFZZ
C340FBI	3-45	1	PAFZZ		5-26		
C8-18R	F1-93	1	XAFZZ		5-47		
EJS-H250-P4	3-27	1	PAFZZ	MS35333-41	1-60	11	PAFZZ
EYB4	1-18	1	PAFZZ		5-58		
EYS31	1-18	1	PAFZZ				
E4850-1	9-6	4	PAFZZ	MS35338-22	3-34	4	PAFZZ
E5890-20	(See PN MS20066-188)				3-39		
E61823-1	9-20	1	MFFZZ				
E7514-125S	9-5	2	PAFZZ	MS35338-23	3-43	2	PAFZZ
E7531-37S	9-17	2	XBFZZ				
E8090-8	(See PN MS20066-257)						
FAAOB-800	F1-63	1	XAFZZ				
FAC-OB	1-63	1	PAFZZ				
FIG48-1/4-240	1-98	3	PAFZZ				

PART NUMBER	FIG. & INDEX NUMBER	QTY PER END ITEM	SMR	PART NUMBER	FIG. & INDEX NUMBER	QTY PER END ITEM	SMR
MS35338-24	2-6	23	PAFZZ	MS9047-003	8-38	1	PAFZZ
	2-17			MS9047-098	8-52	1	PAFZZ
	3-30			MS90725-113	1-73	2	PAFZZ
	3-48			MS90725-114	1-74	2	PAFZZ
	3-52			MS90725-13	1-48	4	PAFZZ
	7-3			MS90725-3	1-44	5	PAFZZ
MS35338-26	2-33	4	PAFZZ		1-55		
MS35338-27	1-90	2	PAFZZ	MS90725-32	1-59	4	PAFZZ
MS35338-29	2-36	1	PAFZZ	MS90725-33	2-32	4	PAFZZ
MS35338-46	10-7	16	PAFZZ				
MS35338-48	10-10	10	PAFZZ	MS90725-5	5-46	1	PAFZZ
MS35389-6	1-82	2	PAFZZ	MS90725-6	1-38	1	PAFZZ
MS35392-52	1-83	2	PAFZZ	MS90725-62	1-6	4	PAFZZ
MS35649-62	3-33	4	PAFZZ	MS90725-64	1-81	26	PAFZZ
	3-38				3-2		
MS35649-82	3-42	2	PAFZZ	MS90725-65	1-34	4	PAFZZ
MS35650-102	2-16	15	PAFZZ	MS90725-67	1-89	2	PAFZZ
	3-29			MS90725-89	1-96	8	PAFZZ
	3-47			MS90726-58	10-8	16	PAFZZ
	3-51			PRD7AYO	3-41	1	PAFZZ
MS35690-402	5-2	3	PAFZZ	R10-02	4-26	1	PAFZZ
	5-25			ST100	1-13	1	PAFZZ
	8-33			ST45100	1-12	1	PAFZZ
MS35690-405	2-3	4	PAFZZ	ST4550	1-9	2	PAFZZ
MS36690-622	10-6	16	PAFZZ	XHPBS	3-9	2	PAFZZ
MS35690-82	10-9	10	PAFZZ		3-12		
MS35690-882	2-35	1	PAFZZ	XHSSSPOSN3CAM3	3-6	1	PAFZZ
MS35691-602	1-88	2	PAFZZ	XNP-HANDOFFAUTO	3-7	1	PAFZZ
MS35691-622	2-25	1	PAFZZ	XNP-START	3-10	1	PAFZZ
MS39230-2	4-3	1	PAFZZ	XNP-STOP	3-13	1	PAFZZ
MS39230-6	1-19	1	PAFZZ	X5133-31	8-36	1	PAFZZ
MS49005-6	5-8.1	1	PAFZZ				
MS51922-1	1-37	19	PAFZZ	10-3523-3	3-57	1	PAFZZ
	1-43			10250T2	3-5	4	PAFZZ
	1-47				3-8		
	1-54			10250T3	3-11	1	PAFZZ
	1-57			11032	(See PN CC-0609)		
	8-6			114524	(See PN MS35649-62)		
MS51922-17	1-5	12	PAFZZ	114658	(See PN MS35649-82)		
	1-32			115295	(See PN MS35650-102)		
	1-79			1185-4CN3-8	5-7	1	PAFZZ
MS51922-25	1-95	8	PAFZZ	120214	(See PN MS35338-26)		
MS51922-33	1-72	4	PAFZZ	120217	(See PN MS35338-24)		
MS51953-121	1-20	1	PAFZZ	120229	(See PN MS90725-33)		
MS51953-25	4-1	6	PAFZZ	120371	(See PN MS35690-882)		
	4-6			120375	(See PN MS35690-402)		
	4-25			120382	(See PN MS35338-27)		
	4-27			120384	(See PN MS35338-29)		
	4-35			120394	(See PN MS27183-14)		
MS51953-29	4-31	1	PAFZZ	120680	(See PN MS51963-67)		
MS51953-97	1-16	1	PAFZZ	120687	8-11	3	PAFZZ
MS51963-103	2-21	1	PAFZZ	120706	(See PN MS90725-3)		
MS51963-120	2-38	1	PAFZZ	120854	(See PN MS90725-5)		
MS51963-67	1-62	1	PAFZZ	120910	3-31	9	PAFZZ
MS51981-46	8-20	1	PAFZZ		3-49		
					3-53		

PART NUMBER	FIG. & INDEX NUMBER	QTY PER END ITEM	SMR	PART NUMBER	FIG. & INDEX NUMBER	QTY PER END ITEM	SMR
120918	(See PN MS90725-64)			18806	5-33	1	PAFZZ
121222	(See PN MS24665-283)			192050	(See PN MS51953-25)		
121223	(See PN MS24665-134)			192052	(See PN MS51953-29)		
121841	(See PN MS35338-23)			192089	1-10	1	PAFZZ
121887	(See PN MS90725-6)			192470	(See PN MS51953-97)		
121940	(See PN MS90725-13)			1940SC	4-10	1	PAFZZ
122007	(See PN MS90725-32)			1958L	4-16	2	KFFZZ
122145	(See PN MS90725-62)			2021-4-6	4-29	1	PAFZZ
122168	(See PN MS90725-65)						
122188	(See PN MS90725-67)			2024-4-6	1-2	1	PAFZZ
1224-06	5-42	3	PAFZZ	219310	(See PN MS20913-16S)		
122433	(See PN MS90725-113)			23-3522	3-58	1	PAFZZ
122446	(See PN MS90725-114)			23680	(See PN 2024-4-6)		
124829	(See PN MS35691-602)			24031	6-35	1	PAFZZ
124925	(See PN MS35691-622)			24495	8-8	1	PAFZZ
125637	(See PN MS24665-360)			24496	8-22	2	PAFZZ
127878	(See PN MS51953-121)				8-54		
127792	(See PN MS39230-6)			24497	8-4	2	PAFZZ
12910T	4-20	1	XAFZZ	24498	5-60	2	PAFZZ
12912T	4-15	1	PAFZZ		8-30		
12913	4-21	1	XAFZZ	24500	8-53	2	PAFZZ
131044	(See PN MS35338-22)			24501	8-48	1	PAFZZ
132033	1-69	12	PAFZZ	24502	8-51	1	PAFZZ
	5-38			24505	6-2	2	PAFZZ
132277	5-27	1	PAFZZ	24506	8-18		
132711	3-35	4	PAFZZ	24562	6-7	1	PAFZZ
	3-40			24576	6-29	1	PAFZZ
					(See PN MS9047-098)		
132776	3-44	2	PAFZZ	24627	6-33	1	PAFZZ
132830	5-55	5	XBFZZ	24628	5-49	1	PAFZZ
	7-2			24649	5-15	2	PAFZZ
132903	2-5	8	PAFZZ		6-12		
	2-12			24687	(See PN FIG48-1/4-220)		
139414	(See PN MS51963-103)			24720	10-16	2	PAFZZ
139455	(See PN MS51963-120)			24780	10-15	2	PAFZZ
139515	8-21	1	PAFZZ	24788	(See PN FAC-OB)		
14060	(See PN 4702-2)			24792	(See PN R10-02)		
143162	(See PN MS49005-6)			24794	6-20	1	PAFZZ
144038	1-3	1	PAFZZ	24803	(See PN MS16625-100)		
144083	4-30	1	PAFZZ	24816	(See PN 1185-4CN3-8)		
144112	(See PN MS39230-2)						
144151	4-5	2	PAFZZ	24842	(See PN 2021-4-6)		
	4-36			24962	5-50	2	PAFZZ
144163	4-32	1	PAFZZ		8-17		
144700	5-30	6	PAFZZ	24965	8-9	4	PAFZZ
	5-32				8-32		
	5-34			24966	8-24	2	PAFZZ
145372	1-26	8	PAFZZ	253	3-36	1	PAFZZ
	1-28			25653	8-55	1	PAFZZ
146-103	3-37	1	PAFZZ	25665	8-28	1	PAFZZ
15123	10-12	2	PAFZZ	25666	8-29	1	PAFZZ
15245	10-13	2	PAFZZ	25668	8-31	1	PAFZZ
16037	(See PN MS16624-39)			25672	F5-45	2	PAFZZ
17-8911	3-59	1	PAFZZ	25673	5-44	2	PAFZZ
179625	1-15	1	PAFZZ	25679	5-43	1	PAFZZ
182926	(See PN MS51981-46)			25686	5-64	1	PAFZZ

PART NUMBER	FIG. & INDEX NUMBER	QTY PER END ITEM	SMR	PART NUMBER	FIG. & INDEX NUMBER	QTY PER END ITEM	SMR
25687	5-73	1	PAFZZ	26342	6-14	1	XAFZZ
25688	5-66	1	PAFZZ	26343	6-13	1	PAFZZ
25689	5-67	1	PAFZZ	26346	F6-2	1	PAFZZ
25690	5-68	1	PAFZZ	26488	6-10	1	PAFZZ
25691	5-72	1	PAFZZ	26606	6-34	1	XBFZZ
25692	5-71	1	PAFZZ	26613	8-5	1	PAFZZ
25693	5-70	1	PAFZZ	26615	5-40	1	PAFBZ
25695	5-28	1	PAFZZ	26616-5	8-25	1	
25697	5-17	1	PAFZZ	26616-6	F8-25	1	
25698	5-10	1	PAFZZ	26616-7	F8-25	1	
				26616-8	F8-25	1	PAFZZ
25705	5-14	1	PAFZZ				
25706	5-5	1	PAFZZ	26639	F8-35	1	PAFZZ
25707	5-62	1	PAFZZ	26641	F8-37	1	XAFZZ
25708	8-42	1	XAFZZ	26642	(See PN X5133-31)		
25709	8-43	1	XAFZZ	26643	8-13	3	PAFZZ
25710	8-46	1	XAFZZ	26644	8-10	3	PAFZZ
25711	8-44	1	XAFZZ	26646	8-2	1	PAFZZ
25712	8-45	1	XAFZZ	26647	8-3	1	PAFZZ
				26654	5-36	1	PAFBZ
25713	8-41	1	PAFZZ	26656	F5-45	1	XAFZZ
25715	8-37	1	XAFZZ	26657	5-45	1	PAFZZ
25718	8-34	1	PAFZZ	26662	5-37	4	PAFZZ
25722	6-37	3	PAFZZ	26666	1-75	1	PAFZZ
25724	6-36	2	PAFZZ	26670	6-26	1	PAFZZ
25725	6-1	1	PAFZZ	26671	6-28	1	PAFZZ
25726	6-40	1	PAFZZ	26672	6-27	1	PAFZZ
25730	6-15	1	PAFZZ	26694-1	8-14	1	
				26694-2	F8-14	1	
25740	6-22	1	PAFZZ	26694-3	F8-14	1	
25741	6-25	1	PAFZZ	26694-4	F8-14	1	PAFZZ
25742	6-24	1	PAFZZ	26697	8-1	1	PAFZZ
25743	6-30	1	PAFZZ	26698	8-23	1	PAFZZ
25744	6-19	1	PAFZZ	26701	6-32	1	PAFZZ
25745	6-23	1	PAFZZ	26702	F6-31	1	PAFZZ
25746	6-18	1	PAFZZ	26703	5-1	1	PBFFF
25747	6-17	1	PAFZZ		6-	REF	
25749	6-21	1	PAFZZ	26704	5-63	1	PAFZZ
				26705-1	8-15	1	
25751	5-12	4	PAFZZ	26705-2	F8-15	1	
	5-19			26705-3	F8-15	1	
	5-22			26705-4	F8-15	1	PAFZZ
25852	6-38	2	PAFZZ	26866-1	8-26	1	
25853	6-39	2	PAFZZ	26866-2	F8-26	1	
25915	1-64	1	PAFZZ	26866-3	F8-26	1	
25941	5-6	1	PAFZZ				
25942	5-48	1	PAFZZ	26866-4	F8-26	1	PAFZZ
25975	6-11	1	XAFZZ	26867-1	8-16	1	
				26867-2	F8-16	1	
				26867-3	F8-16	1	
26206	8-47	5	PAFZZ	26867-4	F8-16	1	PAFZZ
26262	F8-41	1	PAFZZ	26980	5-61	1	XAFZZ
26312	1-66	1	PAFZZ	26981	5-59	1	PAFZZ
26323	5-52	1	PAFZZ	26982	5-65	1	PAFZZ
26336	8-50	1	PAFZZ	27028	5-54	1	PAFZZ
26337	8-49	1	PAFZZ				
26339	6-8	1	XAFZZ	272683	(See PN MS51922-25)		
26340	6-6	1	PAFZZ	27315	(See PN FIG48-1/4-240)		
26341	6-9	1	PAFZZ	273771	3-14	1	PAFZZ

PART NUMBER	FIG. & INDEX NUMBER	QTY PER END ITEM	SMR	PART NUMBER	FIG. & INDEX NUMBER	QTY PER END ITEM	SMR
27593	11-5	2	PAFZZ	3613	10-17	2	XAFZZ
27597	11-9	2	PAFZZ	4013-49	4-17	2	KFFZZ
27602	11-3	2	PAFZZ	40665	7-8	1	XBFZZ
27609	F1-93	1	XAFZZ	40666	7-6	1	XBFZZ
27610	1-92	1	PAFZZ	40758	7-16	1	XBFZZ
27615	4-4	1	PAFZZ	40759	7-1	1	XBFZZ
27623	5-4	1	PAFZZ	40760	7-12	1	XBFZZ
27624	5-13	4	PAFZZ	40761	7-10	1	XBFZZ
	5-20			40762	F7-4	1	PAFZZ
	5-23			40764	7-9	1	XBFZZ
27625	5-11	4	PAFZZ				
	5-18			40766	7-11	1	XBFZZ
				40767	7-14	1	PAFZZ
27626	5-53	1	PAFZZ	40768	7-15	2	PAFZZ
27627	1-85	1	PAFFF	40769	5-21	1	PAFFF
	11-	REF			7-	REF	
27628	1-86	1	PAFFF	40773	5-16	1	PAFZZ
	11-	REF		40774	5-9	1	PAFZZ
27629	11-8	2	PAFZZ	40805	7-4	1	PAFZZ
27630	1-87	2	PAFZZ	41375	F8-55	1	PAFZZ
27631	11-2	4	PAFZZ	41879	8-40	1	XAFZZ
				41180	5-29	1	PAFZZ
27632	11-1	2	PAFZZ	41887	8-39	1	PAFZZ
27633	11-6	2	PAFZZ	41888	(See PN MS9047-003)		
27634	11-4	2	PAFZZ	42233	(See PN A6760)		
27635	11-7	2	PAFZZ	42337	F8-55	1	PAFZZ
27655	F1-93	1	XAFZZ	426816	(See PN MS16997-60)		
27677	1-93	1	PAFZZ	427190	(See PN MS16997-61)		
27679	(See PN 600)			443331	(See PN MS51922-1)		
27691	(See PN 69X6X8)			443335	(See PN MS51922-17)		
27715	1-50	4	PAFZZ	443339	(See PN MS51922-33)		
27775	5-51	1	PAFDD	454480	(See PN MS16997-63)		
	8-	REF		4702-2	10-4	2	PAFZZ
27776	8-19	1	PAFZZ	48-1019	3-60	1	PAFZZ
27777-5	8-27	1		480173-1	F3-18	1	
27777-6	F8-27	1		480174-1	F3-18	1	
27777-7	F8-27	1		5005-49	4-19	2	KFFZZ
27777-8	F8-27	1	PAFZZ	50958	(See PN 59141R)		
27796	1-35	2	PAFZZ	50990	(See PN 59138R)		
27858	8-35	2	PAFZZ	51065	1-23	1	PAFZZ
27968	1-76	2	PAFZZ		3-3	REF	
28038	(SEE PN A655)						
28040	5-31	1	PAFZZ				
28145	(See PN 1224-06)						
28147	(See PN MS35333-41)			51066	1-11	1	PAFZZ
28148	(See PN MS35333-40)			59138R	3-24	3	MFFZZ
28150	(See PN MS35333-39)			59141R	3-25	1	MFFZZ
28151	1-58	1	PAFZZ	6-23-2	3-55	1	PAFZZ
28275	F5-74	1	PAFZZ	600	1-97	1	PAFZZ
28320	F6-15	1	PAFZZ	60469	F5-56	1	PAFZZ
28389	(See PN 69X6)			6251-10	10-11	10	PAFZZ
28599	1-45	1	MFFZZ	6311	10-14	2	PAFZZ
28601	1-46	1	MFFZZ	6312	10-1	2	PAFZZ
28839	(See PN 7235X4)						
28842	(See PN B7405X4X4)			64821	(See PN BL75)		
29061	7-13	1	PAFZZ	6521SC	4-9	1	PAFZZ
2965454	F3-19	1		6524SC	4-11	1	
2965461	F3-19	1		65372	(See PN 949T-2PP(P))		
3-141	3-32	1	PAFZZ	65383	(See PN MS35389-6)		

PART NUMBER	FIG. & INDEX NUMBER	QTY PER END ITEM	SMR	PART NUMBER	FIG. & INDEX NUMBER	QTY PER END ITEM	SMR
66582	(See PN C8-18R)			68155	1-56	1	PAFZZ
66707	(See PN 6783)			68156	5-8	1	PAFZZ
66880	2-19	1	PAFZZ	68157	1-71	1	PAFDD
66881	2-13	1	PAFZZ		5-	REF	
66882	2-14	1	PAFZZ	68158	1-78	1	PAFFF
66883	2-9	1	PAFZZ		9-	REF	
66885	1-36	1	PBFFF	68159	1-105	1	XBFFZ
	4	REF		68160	1-94	1	PBFZZ
66954	3-18	1	PAFZZ	68162	(See PN MS24322-5)		
66955	3-19	1	PAFZZ		1-61	1	PAFZZ
					(See PN XHSSSPOSN3CAM3)		
66956	3-20	1	MFFZZ		(See PN XHPBS)		
66957	3-21	1	MFFZZ		(See PN 480174-1)		
66958	3-22	1	MFFZZ		(See PN 480173-1)		
66964	(See PN H1035)			68195			
66965	(See PN H1041)			68276	3-28	1	PAFZZ
67097	4-34	1	MFFZZ	68295	5-24	1	PAFZZ
67103	2-34	1	PAFZZ	68408	(See PN FIS-H250-P4)		
67104	2-26	1	PAFZZ	68409	(See PN C340DNG)		
67105	2-28	1	PAFZZ				
67106	2-29	1	PAFZZ	68410	3-62	1	XAFZZ
				68411	(See PN A51CNVOA)		
67107	(See PN MS16624-43)			68413	1-21	1	PAFZZ
67109	(See PN MS16624-125)			68416	5-74	1	PAFBZ
67110	2-23	1	PAFZZ	68418	1-91	1	PAFZZ
67111	2-8	1	PAFZZ	68419	1-52	1	PAFBZ
67112	2-24	1	PAFZZ	68420	1-4	1	PBFFF
67113	2-20	1	PAFZZ		2-	REF	
67115	2-18	6	PAFZZ	68421	1-68	1	MFFZZ
67120	2-7	4	PAFZZ				
67362	(See PN CGB-398)			68422	1-51	1	PAFZZ
67365	(See PN EYS31)			68423	3-61	1	MFFZZ
67369	1-14	1	PAFZZ	68424	(See PN 3-141)		
				68527	1-29	1	PAFZZ
67371	(See PN 75-223)			68531	2-15	1	PAFZZ
67372	(See PN 75-423)			68532	2-2	1	PAFZZ
67377	(See PN PRD7AYO)			68533	2-30	1	PAFZZ
67378	(See PN 253)			68534	2-10	2	PAFZZ
67381	(See PN XNP-START)			68535	2-4	1	PAFZZ
67382	(See PN XNP-STOP)						
67600	4-33	1	PAFZZ	68536	2-37	1	PAFZZ
67629	3-23	1	MFFZZ	68538	2-1	1	PAFZZ
67646	(See PN AN320-16)			68540	2-39	1	PAFZZ
				68631	1-27	1	PAFZZ
				68632	1-25	1	PAFZZ
				68633	2-40	1	MDFZZ
67869	4-2	1	PAFZZ	68634	1-103	1	MDFZZ
67919	1-49	5	PAFZZ	68635	1-101	1	MDFZZ
	3-15			68636	1-102	1	MDFZZ
67950	(See PN MS90725-89)						
68107	(See PN 146-103)			68637	3-16	1	PAFZZ
68112	(See PN XNP-HANDOFFAUTO)			68639	1-104	1	MDFZZ
68122	(See PN 10250T2)			68648	1-1	1	PAFZZ
68123	(See PN 10250T3)			68649	1-39	1	MFFZZ
				68650	1-40	1	MFFZZ
68151	1-	1	PEFDD	68731	F3-25	1	AFFZZ
68152	1-31	1	PAFDD	68798	(See PN 2965454)		
	3-	REF		68799	(See PN 2965461)		
68154	1-53	1	PAFZZ	68981	1-8	1	PAFZZ

PART NUMBER	FIG. & INDEX NUMBER	QTY PER END ITEM	SMR	PART NUMBER	FIG. & INDEX NUMBER	QTY PER END ITEM	SMR
69X6	1-39A	1	PAFZZ	9045-700	4-13	1	XAFZZ
69X6X8	1-41	1	PAFZZ	9406822	(See PN MS16997-144)		
7325X4	3-17	1	PAFZZ	9411893	2-11	4	PAFZZ
75-223	1-13	1	PAFZZ	9421706	(See PN MS16997-79)		
75-421	1-9	2	PAFZZ	9426053	1-30	2	PAFZZ
75-423	1-12	1	PAFZZ	949T-2PP(P)	4-7	1	PAFZZ
9-1888-2	3-56	1	PAFZZ				

1. The first part of the document is a letter from the President of the United States to the Congress, dated January 1, 1861. It is a very important document, as it sets out the President's policy for the new year.

2. The second part of the document is a report from the Secretary of the Treasury, dated January 1, 1861. It contains a detailed account of the financial state of the country at the beginning of the year.

3. The third part of the document is a report from the Secretary of the Interior, dated January 1, 1861. It contains a detailed account of the state of the interior of the country at the beginning of the year.

4. The fourth part of the document is a report from the Secretary of the Navy, dated January 1, 1861. It contains a detailed account of the state of the Navy at the beginning of the year.

5. The fifth part of the document is a report from the Secretary of the War, dated January 1, 1861. It contains a detailed account of the state of the War at the beginning of the year.

6. The sixth part of the document is a report from the Secretary of the State, dated January 1, 1861. It contains a detailed account of the state of the State at the beginning of the year.

7. The seventh part of the document is a report from the Secretary of the War, dated January 1, 1861. It contains a detailed account of the state of the War at the beginning of the year.

8. The eighth part of the document is a report from the Secretary of the State, dated January 1, 1861. It contains a detailed account of the state of the State at the beginning of the year.

9. The ninth part of the document is a report from the Secretary of the War, dated January 1, 1861. It contains a detailed account of the state of the War at the beginning of the year.

SECTION IV
REFERENCE DESIGNATION INDEX

Reference Designation	Figure & Index No.	Reference Designation	Figure & Index No.
B1	1-78	P\$	3-27
	9-	SS	3-6
CPT	3-46	TB1	3-32
CR	3-41	TR	3-36
FU	3-45	TT	5-8
M	3-50	W1	3-18
OL	3-57	W2	3-19
P1	F3-19	W3	3-20
P2	F3-18	W4	3-21
2PB	3-9		
1PB	3-12		





